



# LIVE CENTER FACE DRIVERS



주식회사 포인트 테크  
韓國GG頂尖製造會社  
POINT TECH CO., LTD.

# POINT TECH

How Point Tech is working for our valued customers

As a leading manufacturer of high quality live and dead centers, we are providing the best quality at the lowest price to our customers.

Each Point Tech center is manufactured to achieve 100% customer satisfaction, and we are selling not only high quality products but also our pride to customers.

Every center is tested at least 4 times to ensure our customer the highest quality available in the market today.

PointTech products are sold throughout the world by our sales representatives.

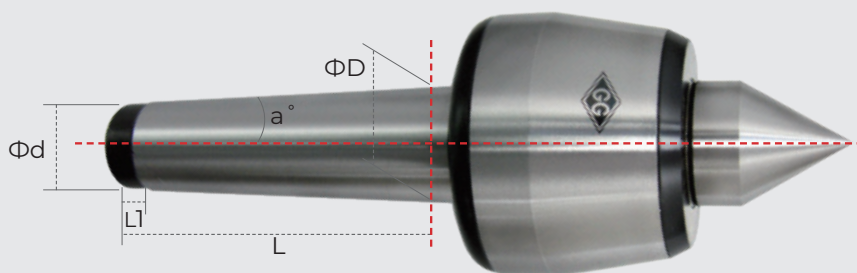
If you do not know how to purchase our products, give us a call at +82 62 942 0451 or E-mail (point@pointtec.com) and we will provide you the local dealers.



## I HISTORY

- 2023** "Global Leading Company 1,000+" certified by Ministry of SME
- 2019** Switzerland export open
- 2018** Designated as Promising Export Small and Medium Enterprise by Ministry of SMEs and Startups.
- 2014** Received exemplary taxpayer citation by National Tax Service.
- 2013** Factory transfer to high tech industrial complex.
- 2010** Develop Live tool holder.
- 2008** Export face driver products to Japan.
- 2007** Develop BS type live center for high speed precision turning machine
- 2006** Develop HS type live center for large-scale, precision grinding.
- 2005** Patent registration for Front and Rear Direction Moving Protection Device for live center.
- 2004** POINT TECH CO., LTD. CHINA office open.
- 2003** Germany export open
- 2002** Acquire ISO9001
- 2000** Change company's name into POINTTECH Co., Ltd  
Selected as Venture Company by Korea Small and Medium Business Administration
- 1999** Approved "S" mark by Korean occupational Safety & Health Agency
- 1996** Selected as Advanced Company by kookmin Bank.
- 1995** Specified as Promising Advanced Technology company by Korea Ministry of Commerce & Industry.
- 1990** Selected as Advanced Technology Based Company by Korea Ministry of Commerce & Industry.  
Establish the GIGON INDUSTRIAL CO., LTD as a branch factory.  
(Registered as supporting company of KIA Heavy Industry Co., Ltd)
- 1988** Appointed as the 2nd Class Quality control company by Ministry of Industrial Advancement Administration.
- 1987** Selected as Promising Company by kookmin Bank.
- 1984** Established GIGONG SERVICE CO., LTD  
(Registered as supporting company of Asia Motors Co., LTD and Hwacheon Machinery Co., LTD)

## Morse Taper Dimension



Unit: mm

| Morse Taper(MT) | ΦD(Gauge line) | Φd | a°       | L   | L1 |
|-----------------|----------------|----|----------|-----|----|
| 2               | Φ17.780        | 14 | 1°25'50" | 64  | 4  |
| 3               | Φ23.825        | 19 | 1°26'16" | 79  | 7  |
| 4               | Φ31.267        | 25 | 1°29'15" | 100 | 9  |
| 5               | Φ44.399        | 35 | 1°30'26" | 128 | 9  |
| 6               | Φ63.348        | 51 | 1°29'36" | 179 | 12 |
| 7               | Φ83.058        | 65 | 1°29'22" | 248 | 12 |

## Special Type



POINTTECH offer the special shape of live or dead-center internationally. Head company's technical design team will promptly contact with end-user. And we offer you the drawing including customer's requirements. POINTTECH's special model guarantee Quality, Fast delivery, Reasonable price.

Feel free to contact by e-mail 'point@pointtec.com'

※ Specifications are subject to change without notice for product improvement.

## CNC HIGH SPEED LIVE CENTER

- 06 BN / BNC TYPE
- 07 BNL30 / BNL30C TYPE
- 08 BNL30A / BNL30AC TYPE



## DRAW OFF NUT LIVE CENTER

- 09 BNN / BNNC TYPE



## CNC MULTI SEALING LIVE CENTER

- 10 UN TYPE



## HIGH SPEED MULTI SEALING LIVE CENTER

- 11 UNH TYPE



## HIGH SPEED PREMIUM LIVE CENTER

- 12 BNH / BNHC TYPE
- 13 BNHL30 / BNHL30C TYPE
- BNHL30A / BNHL30AC TYPE



## HIGH SPEED ECONOMICAL LIVE CENTER

- 14 BS / BSC TYPE
- 15 BSL30 / BSL30C TYPE
- 16 BSL30A / BSL30AC TYPE



## SUPER HIGH-SPEED LIVE CENTER

- 17 BHS / BHSC TYPE
- 18 BHSL30 / BHSL30C TYPE
- BHSL30A / BHSL30AC TYPE



## HEAVY DUTY LIVE CENTER

- 19 TN / TNC TYPE



## WATERPROOF LIVE CENTER

- 20 WP / WPC TYPE
- 21 WPL30 / WPL30C TYPE
- 22 WPL30A / WPL30AC TYPE



---

## 80° BULL HEAD LIVE CENTER

23 BP80 TYPE



---

## 60° BULL HEAD LIVE CENTER

24 BP60 TYPE

25 BP60A TYPE



---

## INTERCHANGEABLE POINT LIVE CENTER

26 BNI TYPE

27 BNI POINT



---

## DEAD CENTER

28 DEAD CENTER



---

## EASY THRUST ADJUSTMENT

29 SD / SDC / SDL30 / SDL30C TYPE



---

## FACE DRIVER

30 FACE DRIVER

32 FD SPECIAL TYPE



---

## SUPER HEAVY LIVE CENTER

33 HS / HSN TYPE



---

## VALUE-TURN LIVE CENTER

34 BB / BBC TYPE

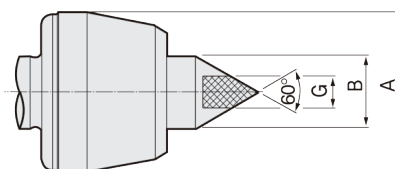
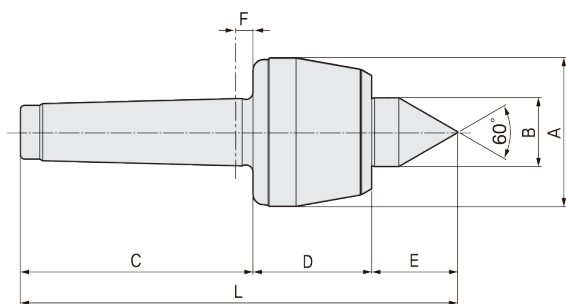
35 BBL30 / BBL30C TYPE



# BN

## FEATURES

- Accuracy guaranteed to 0.003mm TIR (0.0001")
- Excellent for CNC and conventional machines.
- Heat-treated point to HRc 60±2.
- High performance lip seal and deflected shaft design protects bearing space (Double Angular Contact Bearing) from ingress by dust and coolant.
- Heat-treated body for extra strength, rigidity and long life.
- Carbide point available.
- Carbide point to HRa 90±5.



### Available Carbide Tipped Points

#### BNC-TYPE

- MT2: 012002
- MT3: 012003
- MT4: 012004
- MT5: 012005
- MT6: 012006

## Dimension

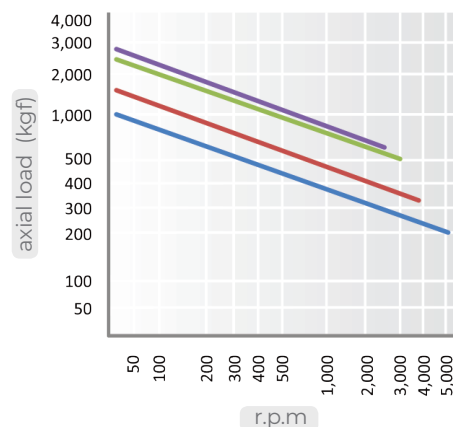
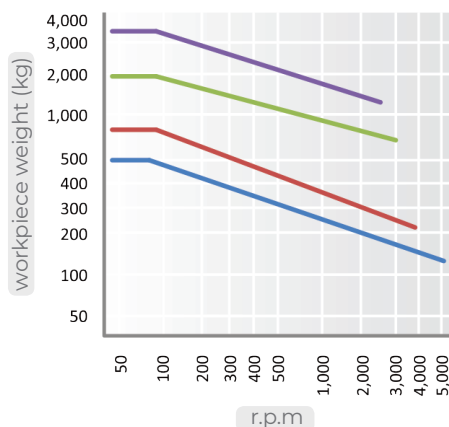
Unit: mm, kg

| MODEL              | MT | A   | B  | C   | D    | E    | F  | G  | L     | Workpiece Weight | Max, R.P.M | Weight | Max, Run Out |
|--------------------|----|-----|----|-----|------|------|----|----|-------|------------------|------------|--------|--------------|
| 011002<br>(012002) | 2  | 50  | 25 | 68  | 43.5 | 29.5 | 6  | 10 | 141   | 500              | 5,000      | 0.7    | 0.003        |
| 011003<br>(012003) | 3  | 50  | 25 | 85  | 43.5 | 29.5 | 6  | 10 | 158   | 500              | 5,000      | 0.8    | 0.003        |
| 011004<br>(012004) | 4  | 69  | 32 | 108 | 55   | 40   | 8  | 14 | 203   | 800              | 3,800      | 1.85   | 0.003        |
| 011005<br>(012005) | 5  | 88  | 40 | 136 | 70   | 50.5 | 8  | 18 | 256.5 | 2,000            | 3,000      | 4.2    | 0.003        |
| 011006<br>(012006) | 6  | 105 | 50 | 189 | 81.5 | 58.2 | 10 | 30 | 328.7 | 3,500            | 2,800      | 8.7    | 0.005        |

\*(MODEL NO) : Carbide Tip Type

## BN type Technical data

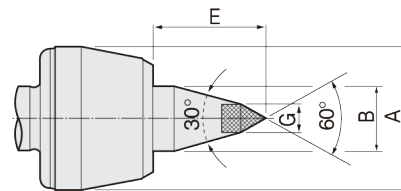
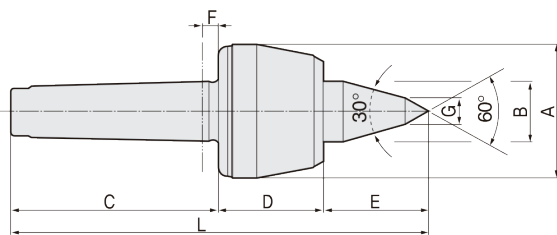
- 2,3BN
- 4BN
- 5BN
- 6BN



# BNL30

## FEATURES

- Accuracy guaranteed to 0.003mm TIR (0.0001")
- Excellent for CNC and conventional machines.
- Shaft extension type; improve tool clearance and machining flexibility.
- Heat-treated point to HRc 60±2.
- High performance lip seal and deflected shaft design protects bearing space (Double Angular Contact Bearing) from ingress by dust and coolant.
- Heat-treated body for extra strength, rigidity and long life.
- Carbide point available.
- Carbide point to HRa 90±5.



### Available Carbide Tipped Points BNL30C-TYPE

- MT2: 014002
- MT3: 014003
- MT4: 014004
- MT5: 014005
- MT6: 014006

## Dimension

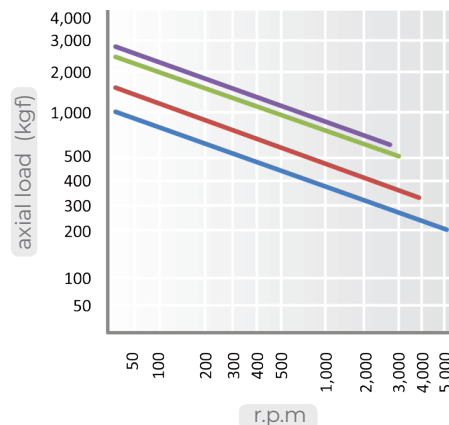
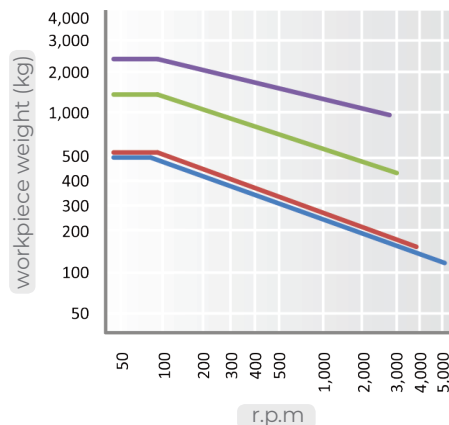
Unit: mm. kg

| MODEL              | MT | A   | B  | C   | D    | E    | F  | G  | L     | Workpiece Weight | Max, R.P.M | Weight | Max, Run Out |
|--------------------|----|-----|----|-----|------|------|----|----|-------|------------------|------------|--------|--------------|
| 013002<br>(014002) | 2  | 50  | 25 | 68  | 43.5 | 40   | 6  | 12 | 151.5 | 500              | 5,000      | 0.7    | 0.003        |
| 013003<br>(014003) | 3  | 50  | 25 | 85  | 43.5 | 45   | 6  | 12 | 174   | 500              | 5,000      | 0.8    | 0.003        |
| 013004<br>(014004) | 4  | 69  | 32 | 108 | 55   | 53   | 8  | 14 | 216   | 550              | 3,800      | 1.9    | 0.003        |
| 013005<br>(014005) | 5  | 88  | 40 | 136 | 70   | 65   | 8  | 18 | 271   | 1,500            | 3,000      | 4.4    | 0.003        |
| 013006<br>(014006) | 6  | 105 | 50 | 189 | 81.5 | 77.5 | 10 | 30 | 348   | 2,500            | 2,800      | 8.7    | 0.005        |

\*(MODEL NO) : Carbide Tip Type

## BNL30 type Technical data

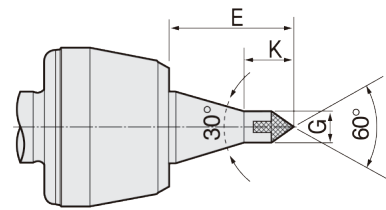
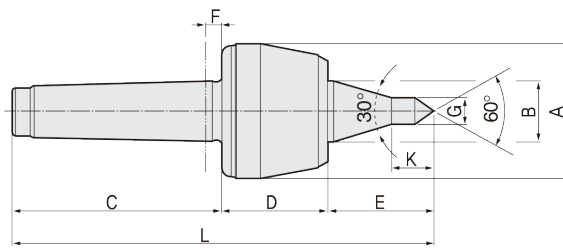
- 2,3BNL30
- 4BNL30
- 5BNL30
- 6BNL30



# BNL30A

## FEATURES

- Accuracy guaranteed to 0.003mm TIR (0.0001")
- Excellent for CNC and conventional machines.
- Shaft extension type; improve tool clearance and machining flexibility.
- Heat-treated point to HRc 60 ± 2.
- High performance lip seal and deflected shaft design protects bearing space (Double Angular Contact Bearing) from ingress by dust and coolant.
- Heat-treated body for extra strength, rigidity and long life.
- Carbide point available.
- Carbide point to HRa 90 ± 5.



### Available Carbide Tipped Points

#### BNL30A-C-TYPE

- MT2: 016002
- MT3: 016003
- MT4: 016004
- MT5: 016005
- MT6: 016006

## Dimension

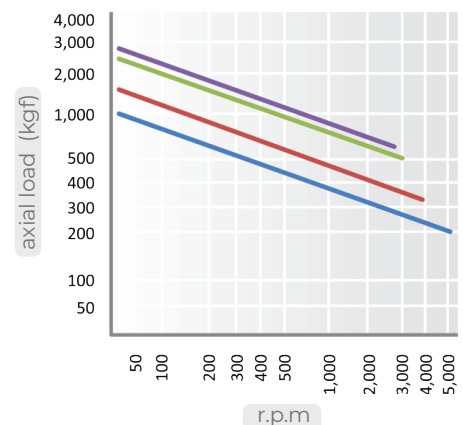
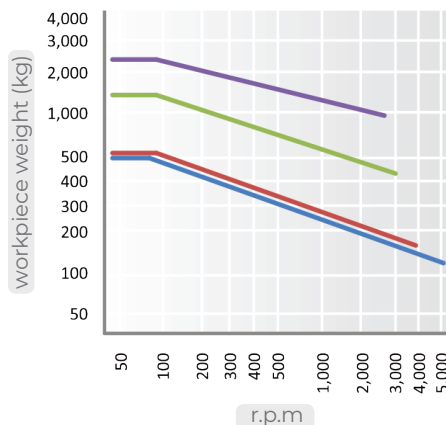
Unit: mm. kg

| MODEL              | MT | A   | B  | C   | D    | E    | F  | G    | K    | L     | Workpiece Weight | Max. R.P.M | Weight | Max. Run Out |
|--------------------|----|-----|----|-----|------|------|----|------|------|-------|------------------|------------|--------|--------------|
| 015002<br>(016002) | 2  | 50  | 25 | 68  | 43.5 | 50   | 6  | 10   | 19   | 161.5 | 500              | 5,000      | 0.7    | 0.003        |
| 015003<br>(016003) | 3  | 50  | 25 | 85  | 43.5 | 50   | 6  | 10   | 19   | 178.5 | 500              | 5,000      | 0.8    | 0.003        |
| 015004<br>(016004) | 4  | 69  | 32 | 108 | 55   | 63.5 | 8  | 12.5 | 23.5 | 226.5 | 550              | 3,800      | 1.9    | 0.003        |
| 015005<br>(016005) | 5  | 88  | 40 | 136 | 70   | 80   | 8  | 12.5 | 23.5 | 286   | 1,500            | 3,000      | 4.4    | 0.003        |
| 015006<br>(016006) | 6  | 105 | 50 | 189 | 81.5 | 105  | 10 | 14   | 30   | 375.5 | 2,500            | 2,800      | 8.7    | 0.005        |

\*(MODEL NO) : Carbide Tip Type

## BNL30A type Technical data

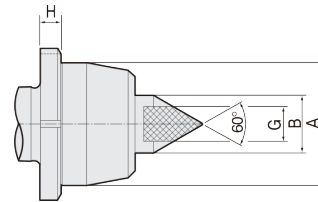
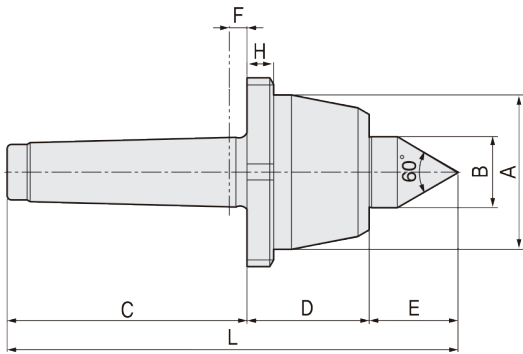
- 2,3BNL30A
- 4BNL30A
- 5BNL30A
- 6BNL30A



# BNN

## FEATURES

- Accuracy guaranteed to 0.003mm TIR (0.0001")
- Excellent for CNC and conventional machines.
- Draw-off nut type. (Help to easy release from tail-stock.)
- Heat-treated point to HRc 60 ± 2.
- High performance lip seal and deflected shaft design protects bearing space (Double Angular Contact Bearing) from ingress by dust and coolant.
- Heat-treated body for extra strength, rigidity and long life.
- Carbide point available.
- Carbide point to HRA 90 ± 5.



### Available Carbide Tipped Points BNNC-TYPE

- MT2: 022002
- MT3: 022003
- MT4: 022004
- MT5: 022005
- MT6: 022006

## Dimension

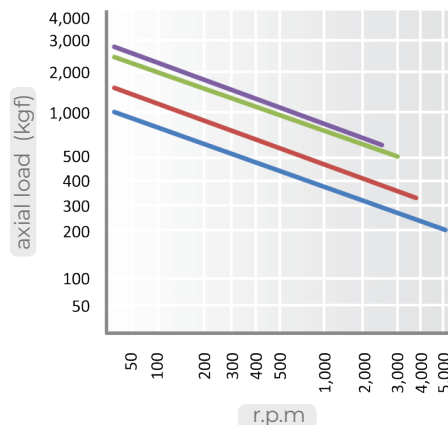
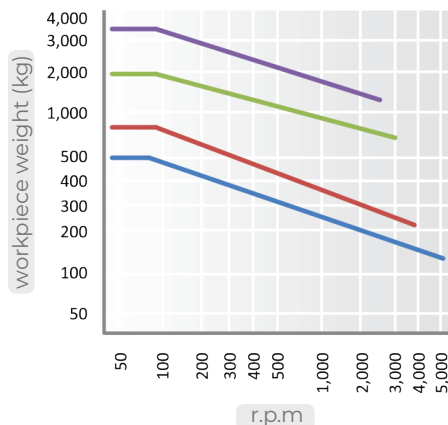
Unit: mm. kg

| MODEL              | MT | A   | B  | C   | D    | E    | F  | H  | G  | L     | Workpiece Weight | Max. R.P.M | Weight | Max. Run Out | AN NUT NO. |
|--------------------|----|-----|----|-----|------|------|----|----|----|-------|------------------|------------|--------|--------------|------------|
| 021002<br>(022002) | 2  | 50  | 25 | 68  | 43.5 | 29.5 | 6  | 10 | 10 | 141   | 500              | 5,000      | 1      | 0.003        | AN09       |
| 021003<br>(022003) | 3  | 50  | 25 | 85  | 43.5 | 29.5 | 6  | 10 | 10 | 158   | 500              | 5,000      | 1      | 0.003        | AN09       |
| 021004<br>(022004) | 4  | 69  | 32 | 108 | 55   | 40   | 8  | 12 | 14 | 203   | 800              | 3,800      | 2.1    | 0.003        | AN13       |
| 021005<br>(022005) | 5  | 88  | 40 | 136 | 70   | 50.5 | 8  | 16 | 18 | 256.5 | 2,000            | 3,000      | 5      | 0.003        | AN17       |
| 021006<br>(022006) | 6  | 105 | 50 | 189 | 81.5 | 57.5 | 10 | 18 | 30 | 328   | 3,500            | 2,800      | 10.5   | 0.005        | AN20       |

\* (MODEL NO) : Carbide Tip Type

## BNN type Technical data

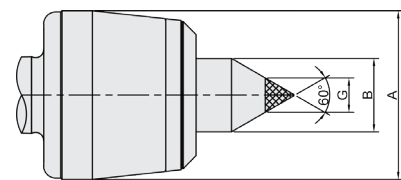
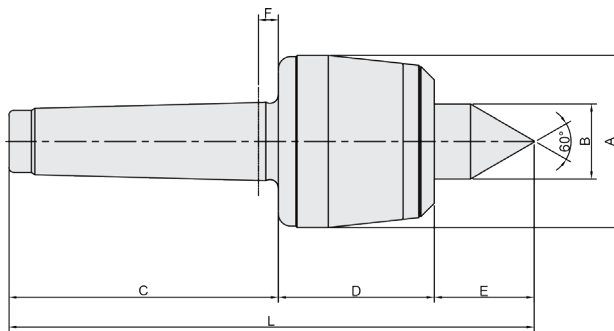
- 2,3BNN
- 4BNN
- 5BNN
- 6BNN



# UN

## FEATURES

- Advanced new product of BN type.
- Accuracy guaranteed to 0.003mm TIR (0.0001")
- Multi sealing (high performance lip seal and V-seal) protects from ingress by dust and coolant.
- Shorten maintenance time for automated CNC installations by longer product life.
- Heat-treated point to HRc 60 ± 2
- Heat-treated body for extra strength, rigidity and long life.
- Carbide point available. (UNC TYPE)
- Carbide point to HRa 90 ± 5.



### Available Carbide Tipped Points UNC-TYPE

- MT4: 152004
- MT5: 152005

## Dimension

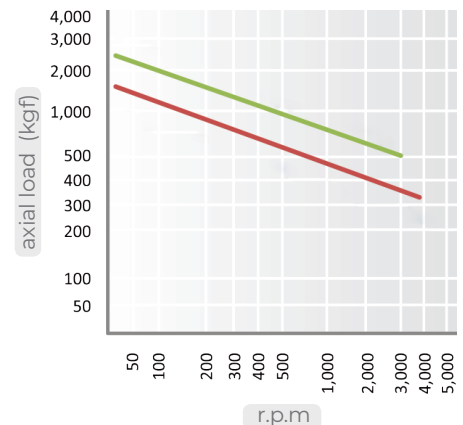
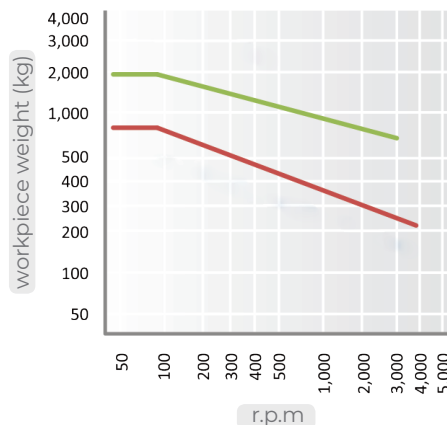
Unit: mm. kg

| MODEL              | MT | A  | B  | C   | D    | E    | F | G  | L     | Workpiece Weight | Max. R.P.M | Weight | Max. Run Out |
|--------------------|----|----|----|-----|------|------|---|----|-------|------------------|------------|--------|--------------|
| 151004<br>(152004) | 4  | 69 | 30 | 108 | 62.5 | 40   | 8 | 14 | 210.5 | 800              | 3,800      | 2      | 0.003        |
| 151005<br>(152005) | 5  | 88 | 38 | 136 | 79   | 50.5 | 8 | 18 | 265.5 | 2,000            | 3,000      | 4.5    | 0.003        |

\* (MODEL NO) : Carbide Tip Type

## UN type Technical data

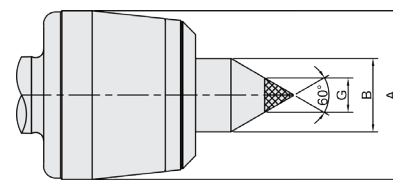
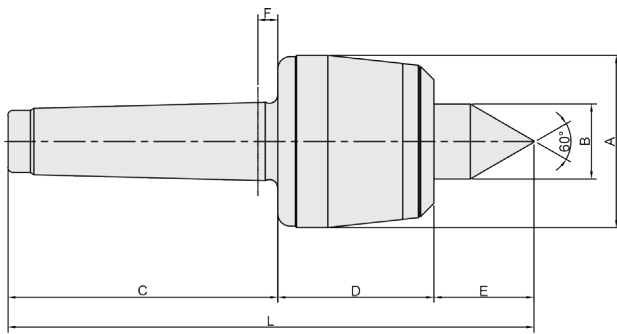
- 4UN
- 5UN



# UNH

## FEATURES

- High speed product of UN type.
- Accuracy guaranteed to 0.003mm TIR (0.0001")
- Multi sealing (high performance lip seal and V-seal) protects from ingress by dust and coolant.
- Shorten maintenance time for automated CNC installations by longer product life.
- Heat-treated point to HRc 60 ± 2.
- Heat-treated body for extra strength, rigidity and long life.
- Carbide point available. (UNHC TYPE)
- Carbide point to HRa 90 ± 5.



### Available Carbide Tipped Points UNHC-TYPE

- MT4: 172004
- MT5: 172005

## Dimension

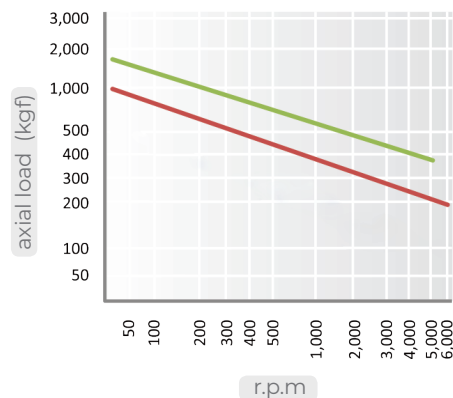
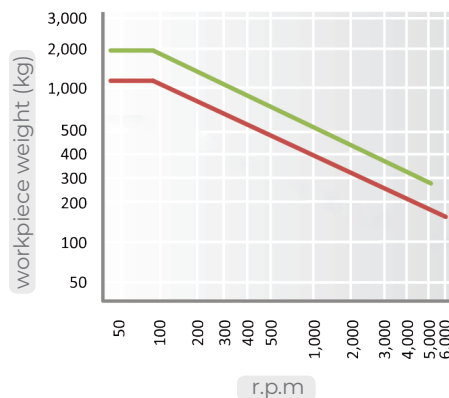
Unit: mm. kg

| MODEL              | MT | A  | B  | C   | D    | E    | F | G  | L     | Workpiece Weight | Max, R.P.M | Weight | Max, Run Out |
|--------------------|----|----|----|-----|------|------|---|----|-------|------------------|------------|--------|--------------|
| 171004<br>(172004) | 4  | 69 | 30 | 108 | 62.5 | 40   | 8 | 14 | 210.5 | 800              | 6,000      | 2      | 0.003        |
| 171005<br>(172005) | 5  | 88 | 38 | 136 | 79   | 50.5 | 8 | 18 | 265.5 | 2,000            | 5,000      | 5      | 0.003        |

\* (MODEL NO) : Carbide Tip Type

## UNH type Technical data

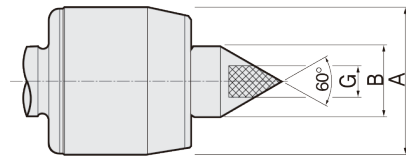
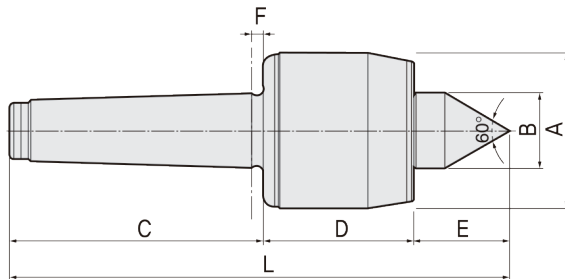
- 4UNH
- 5UNH



# BNH

## FEATURES

- Accuracy guaranteed to 0.002mm TIR (0.0001")
- Excellent for CNC, grinder and high speed precision machining.
- High RPM (Up to 6,000)
- Heat-treated point to HRc 60 ± 2
- Based on roller bearings for superior performance.
- Anti-friction seal for coolant deflectors and high speed.
- Heat-treated body for extra strength, rigidity and long life.
- Carbide point available.
- Carbide point to HRa 90 ± 5.



Available Carbide Tipped Points

**BNHC-TYPE**

- MT3: 032003
- MT4: 032004
- MT5: 032005

## Dimension

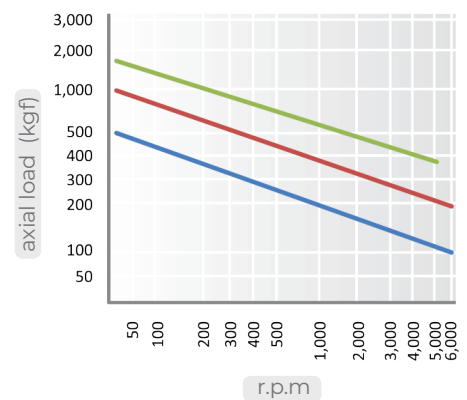
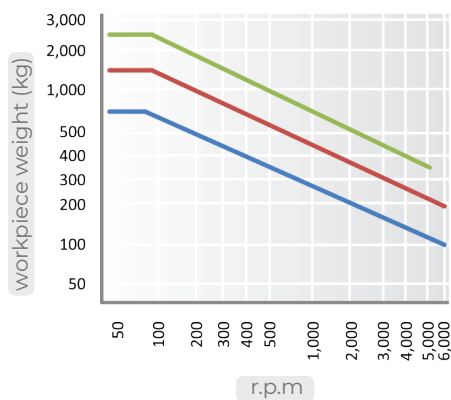
Unit: mm. kg

| MODEL              | MT | A  | B  | C   | D    | E  | F   | G  | L     | Workpiece Weight | Max, R.P.M | Weight | Max, Run Out |
|--------------------|----|----|----|-----|------|----|-----|----|-------|------------------|------------|--------|--------------|
| 031003<br>(032003) | 3  | 50 | 22 | 85  | 51.5 | 26 | 4.5 | 10 | 162.5 | 750              | 6,000      | 1.8    | 0.002        |
| 031004<br>(032004) | 4  | 66 | 32 | 108 | 64   | 41 | 5.3 | 14 | 213   | 1,500            | 6,000      | 2.2    | 0.002        |
| 031005<br>(032005) | 5  | 80 | 40 | 136 | 70   | 41 | 6.3 | 18 | 247   | 2,600            | 5,000      | 5.2    | 0.002        |

\* (MODEL NO) : Carbide Tip Type

## BNH type Technical data

- 3BNH
- 4BNH
- 5BNH

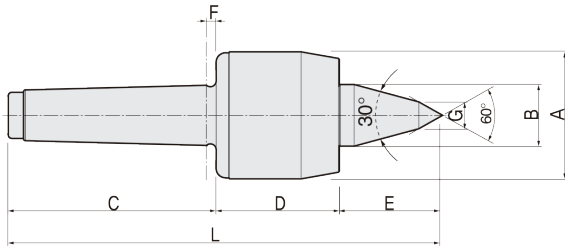


HIGH SPEED PREMIUM LIVE CENTER : Extended 30° Type



# BNHL30

- Accuracy guaranteed to 0.002mm TIR (0.0001")
- Excellent for CNC, grinder and high speed precision machining.
- Shaft extension type; improve tool clearance and machining flexibility.
- High RPM (Up to 6,000)
- Heat-treated point to HRc 60 ± 2
- Based on roller bearings for superior performance.
- Anti-friction seal for coolant deflectors and high speed.
- Heat-treated body for extra strength, rigidity and long life.
- Carbide point available.
- Carbide point to HRa 90 ± 5.



**Available Carbide Tipped Points**  
**BNHL30C-TYPE**

- MT3: 034003
- MT4: 034004
- MT5: 034005

Unit: mm, kg

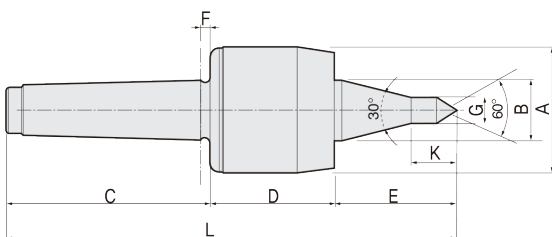
| MODEL              | MT | A  | B  | C   | D    | E  | F   | G  | L     | Workpiece Weight | Max, R.P.M | Weight | Max, Run Out |
|--------------------|----|----|----|-----|------|----|-----|----|-------|------------------|------------|--------|--------------|
| 033003<br>(034003) | 3  | 50 | 22 | 85  | 51.5 | 35 | 4.5 | 12 | 171.5 | 600              | 6,000      | 1.9    | 0.002        |
| 033004<br>(034004) | 4  | 66 | 32 | 108 | 64   | 53 | 5.3 | 14 | 225   | 1,100            | 6,000      | 2.2    | 0.002        |
| 033005<br>(034005) | 5  | 80 | 40 | 136 | 70   | 65 | 6.3 | 16 | 271   | 2,000            | 5,000      | 5.2    | 0.002        |

\* (MODEL NO) : Carbide Tip Type

HIGH SPEED PREMIUM LIVE CENTER : Extended A Type

# BNHL30A

- Accuracy guaranteed to 0.002mm TIR (0.0001")
- Excellent for CNC, grinder and high speed precision machining.
- Shaft extension type; improve tool clearance and machining flexibility.
- High RPM (Up to 6,000)
- Heat-treated point to HRc 60 ± 2
- Based on roller bearings for superior performance.
- Anti-friction seal for coolant deflectors and high speed.
- Heat-treated body for extra strength, rigidity and long life.
- Carbide point available.
- Carbide point to HRa 90 ± 5.



**Available Carbide Tipped Points**  
**BNHL30AC-TYPE**

- MT3: 036003
- MT4: 036004
- MT5: 036005

Unit: mm, kg

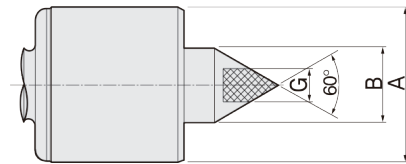
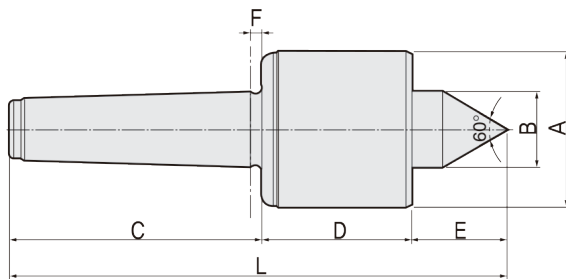
| MODEL              | MT | A  | B  | C   | D    | E    | F   | G    | K    | L     | Workpiece Weight | Max, R.P.M | Weight | Max, Run Out |
|--------------------|----|----|----|-----|------|------|-----|------|------|-------|------------------|------------|--------|--------------|
| 035003<br>(036003) | 3  | 50 | 22 | 85  | 51.5 | 50   | 4.5 | 10   | 19   | 186.5 | 500              | 6,000      | 1.9    | 0.002        |
| 035004<br>(036004) | 4  | 66 | 32 | 108 | 64   | 63.5 | 5.3 | 12.5 | 23.5 | 235.5 | 900              | 6,000      | 2.2    | 0.002        |
| 035005<br>(036005) | 5  | 80 | 40 | 136 | 70   | 80   | 6.3 | 12.5 | 23.5 | 286   | 1,700            | 5,000      | 5.2    | 0.002        |

\* (MODEL NO) : Carbide Tip Type

# BS

## FEATURES

- Accuracy guaranteed to 0.002mm TIR (0.0001")
- Excellent for CNC, grinder and high speed light-duty machining.
- High RPM (Up to 6,000)
- Heat-treated point to HRc 60 ± 2.
- Based on double angular contact bearings for superior performance.
- Anti-friction seal for coolant deflectors and high speed.
- Heat-treated body for extra strength, rigidity and long life.
- Carbide point available.
- Carbide point to HRa 90 ± 5.



Available Carbide Tipped Points

### BSC-TYPE

- MT3: 162003
- MT4: 162004
- MT5: 162005

## Dimension

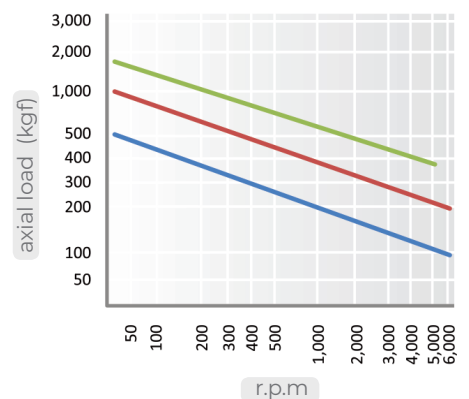
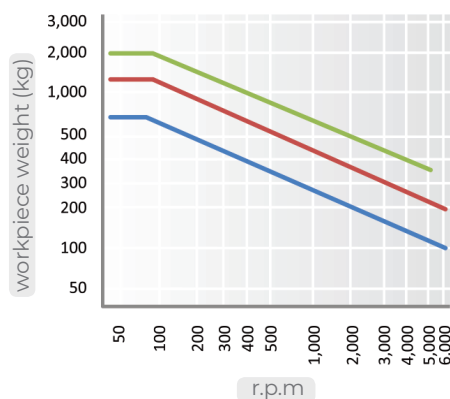
Unit: mm. kg

| MODEL              | MT | A  | B  | C   | D  | E    | F   | G  | L     | Workpiece Weight | Max. R.P.M | Weight | Max. Run Out |
|--------------------|----|----|----|-----|----|------|-----|----|-------|------------------|------------|--------|--------------|
| 161003<br>(162003) | 3  | 50 | 20 | 85  | 58 | 23   | 4.5 | 10 | 166   | 750              | 6,000      | 1.9    | 0.002        |
| 161004<br>(162004) | 4  | 66 | 31 | 107 | 71 | 33.5 | 5.3 | 14 | 211.5 | 1,300            | 6,000      | 2.4    | 0.002        |
| 161005<br>(162005) | 5  | 80 | 35 | 136 | 78 | 38   | 6.3 | 18 | 252   | 2,000            | 5,000      | 5.3    | 0.002        |

\* (MODEL NO) : Carbide Tip Type

## BS type Technical data

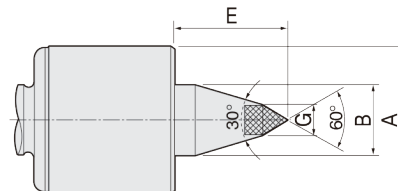
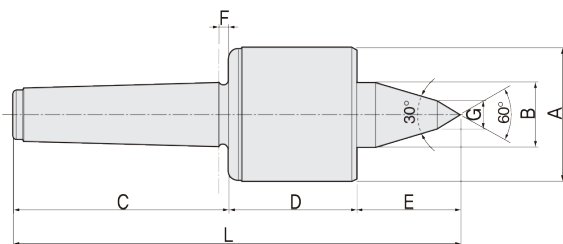
- 3BS
- 4BS
- 5BS



# BSL30

## FEATURES

- Accuracy guaranteed to 0.002mm TIR (0.0001")
- Excellent for CNC, grinder and high speed light-duty machining.
- Shaft extension type; improve tool clearance and machining flexibility.
- High RPM (Up to 6,000)
- Heat-treated point to HRc 60
- Based on double angular contact bearings for superior performance.
- Anti-friction seal for coolant deflectors and high speed.
- Heat-treated body for extra strength, rigidity and long life.
- Carbide point available.
- Carbide point to HRA 90 ± 5.



### Available Carbide Tipped Points BSL30C-TYPE

- MT3: 164003
- MT4: 164004
- MT5: 164005

## Dimension

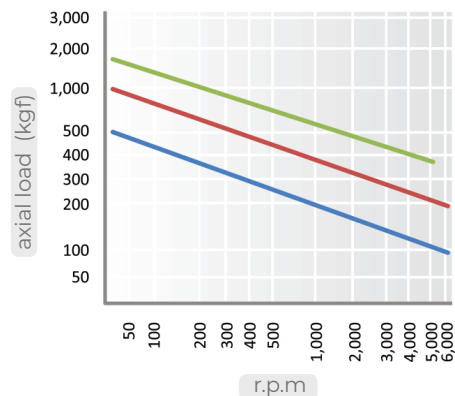
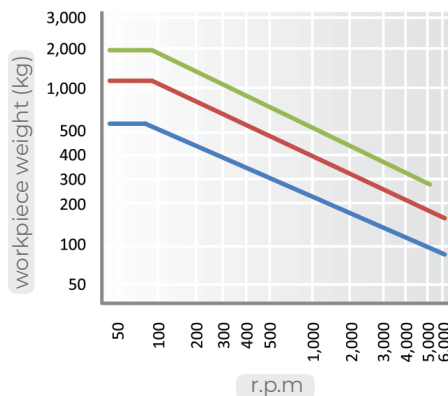
Unit: mm. kg

| MODEL              | MT | A  | B  | C   | D  | E  | F   | G  | L   | Workpiece Weight | Max, R.P.M | Weight | Max, Run Out |
|--------------------|----|----|----|-----|----|----|-----|----|-----|------------------|------------|--------|--------------|
| 163003<br>(164003) | 3  | 50 | 20 | 85  | 58 | 31 | 4.5 | 10 | 174 | 600              | 6,000      | 1.9    | 0.002        |
| 163004<br>(164004) | 4  | 66 | 31 | 107 | 71 | 51 | 5.3 | 14 | 229 | 1,100            | 6,000      | 2.4    | 0.002        |
| 163005<br>(164005) | 5  | 80 | 35 | 136 | 78 | 53 | 6.3 | 18 | 267 | 2,000            | 5,000      | 5.3    | 0.002        |

\*(MODEL NO) : Carbide Tip Type

## BSL30 type Technical data

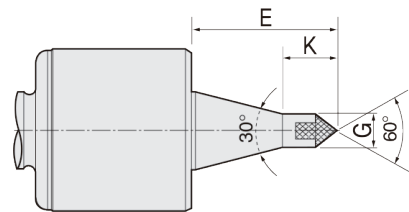
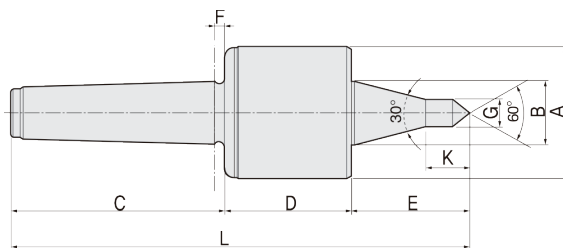
- 3BSL30
- 4BSL30
- 5BSL30



# BSL30A

## FEATURES

- Accuracy guaranteed to 0.002mm TIR (0.0001")
- Excellent for CNC, grinder and high speed light-duty machining.
- Shaft extension type; improve tool clearance and machining flexibility.
- High RPM (Up to 6,000)
- Heat-treated point to HRc 60 ± 2.
- Based on double angular contact bearings for superior performance.
- Anti-friction seal for coolant deflectors and high speed.
- Heat-treated body for extra strength, rigidity and long life.
- Carbide point available.
- Carbide point to HRa 90 ± 5.



### Available Carbide Tipped Points **BSL30AC-TYPE**

- MT3: 166003
- MT4: 166004
- MT5: 166005

## Dimension

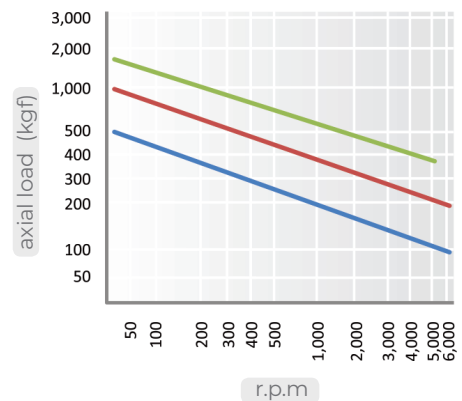
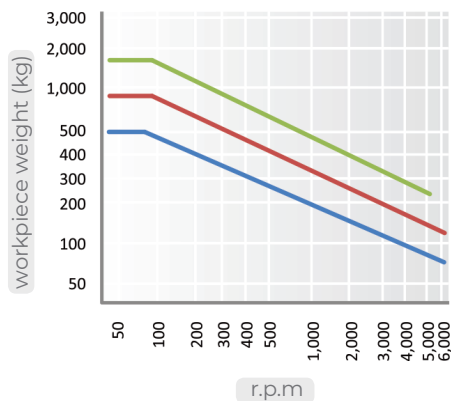
Unit: mm. kg

| MODEL              | MT | A  | B  | C   | D  | E    | F   | G    | K    | L     | Workpiece Weight | Max, R.P.M | Weight | Max, Run Out |
|--------------------|----|----|----|-----|----|------|-----|------|------|-------|------------------|------------|--------|--------------|
| 165003<br>(166003) | 3  | 50 | 20 | 85  | 58 | 37   | 4.5 | 10   | 15   | 180   | 500              | 6,000      | 1.9    | 0.002        |
| 165004<br>(166004) | 4  | 66 | 31 | 107 | 71 | 63.5 | 5.3 | 12.5 | 23   | 241.5 | 900              | 6,000      | 2.4    | 0.002        |
| 165005<br>(166005) | 5  | 80 | 35 | 136 | 78 | 70   | 6.3 | 12.5 | 23.5 | 284   | 1,700            | 5,000      | 5.3    | 0.002        |

\*(MODEL NO) : Carbide Tip Type

## BSL30A type Technical data

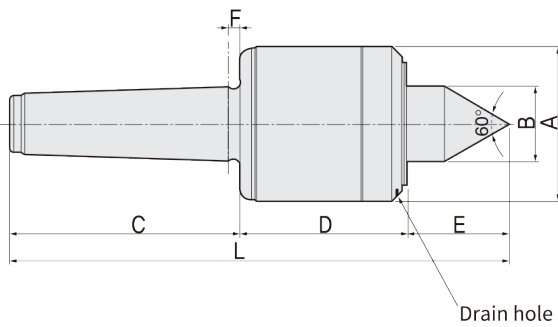
- 3BSL30A
- 4BSL30A
- 5BSL30A



# BHS

## FEATURES

- Accuracy guaranteed to 0.002mm TIR (0.0001")
- Excellent for CNC, grinder and high precision high speed machining.
- High RPM (Up to 12,000)
- Heat-treated point to HRc 60 ± 2.
- Drain hole have to be located on bottom side.
- Labyrinth seal for coolant deflectors and super high speed.
- Heat-treated body for extra strength, rigidity and long life.
- Carbide point available.
- Carbide point to HRa 90 ± 5.



Available Carbide Tipped Points  
**BHSC-TYPE**

- MT2: 042002
- MT3: 042003
- MT4: 042004
- MT5: 042005

## Dimension

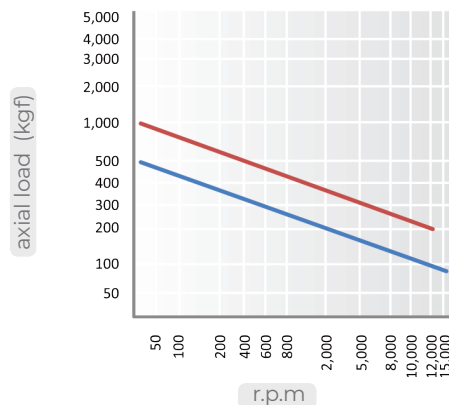
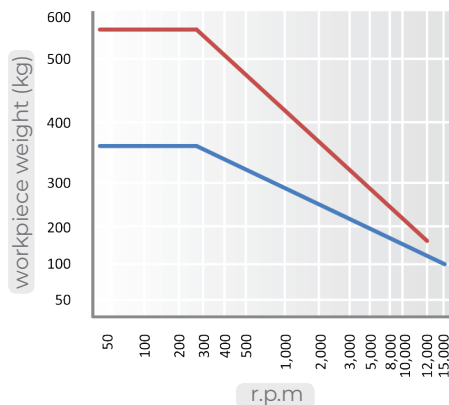
Unit: mm. kg

| MODEL              | MT | A  | B  | C   | D  | E  | F   | G  | L   | Workpiece Weight | Max, R.P.M | Weight | Max, Run Out |
|--------------------|----|----|----|-----|----|----|-----|----|-----|------------------|------------|--------|--------------|
| 041002<br>(042002) | 2  | 50 | 20 | 68  | 54 | 26 | 4   | 10 | 148 | 360              | 15,000     | 1.5    | 0.002        |
| 041003<br>(042003) | 3  | 50 | 20 | 85  | 54 | 26 | 4.5 | 10 | 165 | 360              | 15,000     | 1.8    | 0.002        |
| 041004<br>(042004) | 4  | 70 | 30 | 108 | 75 | 37 | 5.3 | 14 | 220 | 560              | 12,000     | 2.2    | 0.002        |
| 041005<br>(042005) | 5  | 70 | 30 | 136 | 75 | 37 | 6.3 | 18 | 248 | 560              | 12,000     | 5.2    | 0.002        |

\* (MODEL NO) : Carbide Tip Type

## BHS type Technical data

- 2,3BHS
- 4,5BHS

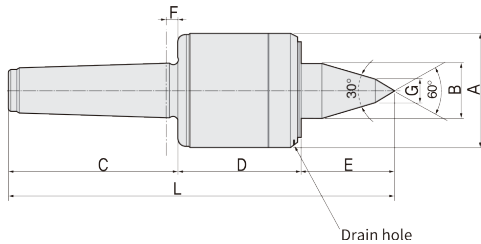


**SUPER HIGH SPEED LIVE CENTER : Extended 30° Type**



# BHSL30

- Accuracy guaranteed to 0.002mm TIR (0.0001")
- Excellent for CNC, grinder and high precision high speed machining.
- Shaft extension type; improve tool clearance and machining flexibility.
- High RPM (Up to 12,000)
- Heat-treated point to HRc 60 ± 2.
- Drain hole have to be located on bottom side.
- Labyrinth seal for coolant deflectors and super high speed.
- Heat-treated body for extra strength, rigidity and long life.
- Carbide point available.
- Carbide point to HRa 90 ± 5.



Available Carbide Tipped Points  
**BHSL30C-TYPE**

- MT2: 044002
- MT3: 044003
- MT4: 044004
- MT5: 044005

Unit: mm. kg

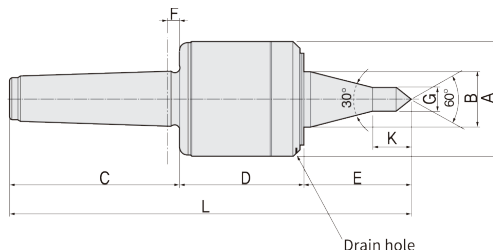
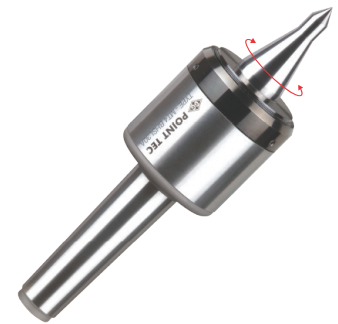
| MODEL              | MT | A  | B  | C   | D  | E  | F   | G  | L   | Workpiece Weight | Max. R.P.M | Weight | Max. Run Out |
|--------------------|----|----|----|-----|----|----|-----|----|-----|------------------|------------|--------|--------------|
| 043002<br>(044002) | 2  | 50 | 20 | 68  | 54 | 38 | 4   | 10 | 160 | 280              | 15,000     | 1.8    | 0.002        |
| 043003<br>(044003) | 3  | 50 | 20 | 85  | 54 | 35 | 4.5 | 12 | 174 | 280              | 15,000     | 1.8    | 0.002        |
| 043004<br>(044004) | 4  | 70 | 30 | 108 | 75 | 53 | 5.3 | 14 | 236 | 450              | 12,000     | 2.2    | 0.002        |
| 043005<br>(044005) | 5  | 70 | 30 | 136 | 75 | 53 | 6.3 | 18 | 264 | 450              | 12,000     | 5.2    | 0.002        |

\* (MODEL NO) : Carbide Tip Type

**SUPER HIGH SPEED LIVE CENTER : Extended A Type**

# BHSL30A

- Accuracy guaranteed to 0.002mm TIR (0.0001")
- Excellent for CNC, grinder and high precision high speed machining.
- Shaft extension type; improve tool clearance and machining flexibility.
- High RPM (Up to 12,000)
- Heat-treated point to HRc 60
- Drain hole have to be located on bottom side.
- Labyrinth seal for coolant deflectors and super high speed.
- Heat-treated body for extra strength, rigidity and long life.
- Carbide point available.
- Carbide point to HRa 90 ± 5.



Available Carbide Tipped Points  
**BHSL30AC-TYPE**

- MT2: 046002
- MT3: 046003
- MT4: 046004
- MT5: 046005

Unit: mm. kg

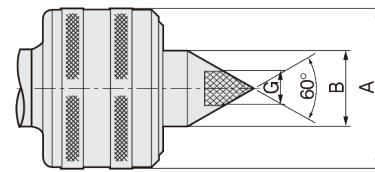
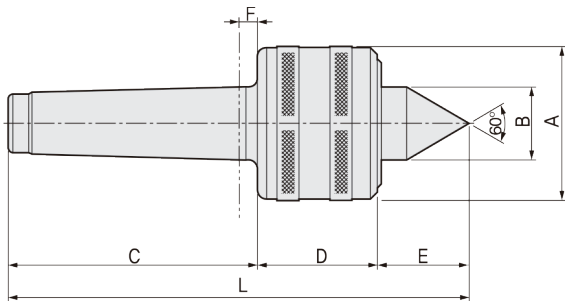
| MODEL              | MT | A  | B  | C   | D  | E    | F   | G    | K    | L     | Workpiece Weight | Max. R.P.M | Weight | Max. Run Out |
|--------------------|----|----|----|-----|----|------|-----|------|------|-------|------------------|------------|--------|--------------|
| 045002<br>(046002) | 2  | 50 | 20 | 68  | 54 | 45   | 4   | 10   | 19   | 167   | 250              | 15,000     | 1.8    | 0.002        |
| 045003<br>(046003) | 3  | 50 | 20 | 85  | 54 | 45   | 4.5 | 10   | 19   | 184   | 250              | 15,000     | 1.8    | 0.002        |
| 045004<br>(046004) | 4  | 70 | 30 | 108 | 75 | 63.5 | 5.3 | 12.5 | 23.5 | 246.5 | 390              | 12,000     | 2.2    | 0.002        |
| 045005<br>(046005) | 5  | 70 | 30 | 136 | 75 | 70   | 6.3 | 12.5 | 23.5 | 281   | 390              | 12,000     | 5.2    | 0.002        |

\* (MODEL NO) : Carbide Tip Type

# TN

## FEATURES

- Accuracy guaranteed to 0.003mm TIR (0.0001")
- Excellent for CNC, conventional machines and heavy-duty machining
- Heat-treated point to HRc 60
- Based on taper roller bearing assembly for superior performance.
- Carbide point available.
- Carbide point to HRa 90±5.



### Available Carbide Tipped Points

#### TNC-TYPE

- MT3: 062003
- MT4: 062004
- MT5: 062005
- MT6: 062006

## Dimension

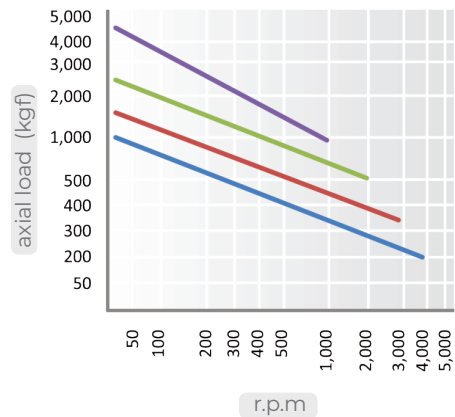
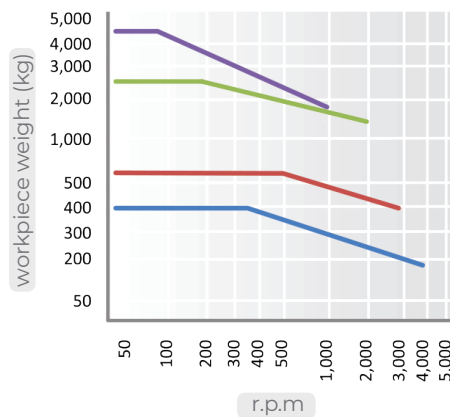
Unit: mm. kg

| MODEL              | MT | A   | B    | C   | D    | E    | F  | G  | L     | Workpiece Weight | Max. R.P.M | Weight | Max. Run Out |
|--------------------|----|-----|------|-----|------|------|----|----|-------|------------------|------------|--------|--------------|
| 061003<br>(062003) | 3  | 51  | 25   | 85  | 44   | 28   | 6  | 10 | 157   | 400              | 4,000      | 0.8    | 0.003        |
| 061004<br>(062004) | 4  | 66  | 32   | 108 | 52   | 40   | 8  | 14 | 200   | 650              | 3,000      | 1.8    | 0.003        |
| 061005<br>(062005) | 5  | 94  | 40   | 136 | 70   | 45.5 | 8  | 18 | 251.5 | 2,500            | 2,000      | 4.3    | 0.003        |
| 061006<br>(062006) | 6  | 127 | 58.5 | 189 | 92.7 | 61.5 | 10 | 30 | 343.3 | 4,500            | 1,000      | 12.5   | 0.005        |
| 061006H            | 6  | 168 | 80   | 191 | 120  | 84   | 10 | -  | 395   | 8,000            | 800        | 20     | 0.005        |
| 061007             | 7  | 168 | 78.5 | 260 | 110  | 82   | 12 | -  | 452   | 5,000            | 500        | 32     | 0.010        |
| 061008             | 7  | 177 | 78.5 | 260 | 124  | 80   | 12 | -  | 464   | 10,000           | 500        | 34     | 0.010        |

\*(MODEL NO) : Carbide Tip Type

## TN type Technical data

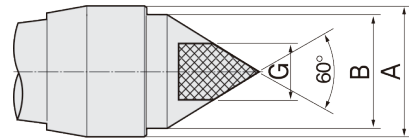
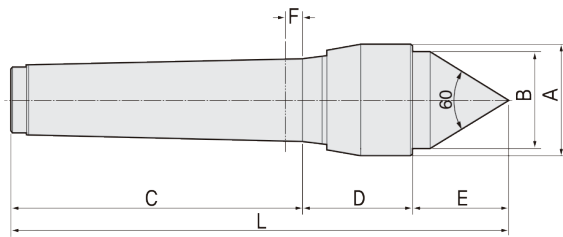
- 3TN
- 4TN
- 5TN
- 6TN



# WP

## FEATURES

- Accuracy guaranteed to 0.003mm TIR (0.0001")
- Excellent for CNC, grinder and inspection machines.
- Waterproof enhanced type.
- Heat-treated point to HRc 60 ± 2.
- Small head diameter reduces interference problem between tool holders and turning tools.
- Carbide point available.
- Carbide point to HRA 90 ± 5.



### Available Carbide Tipped Points

#### WPC-TYPE

- MT2: 072002
- MT3: 072003
- MT4: 072004
- MT5: 072005

## Dimension

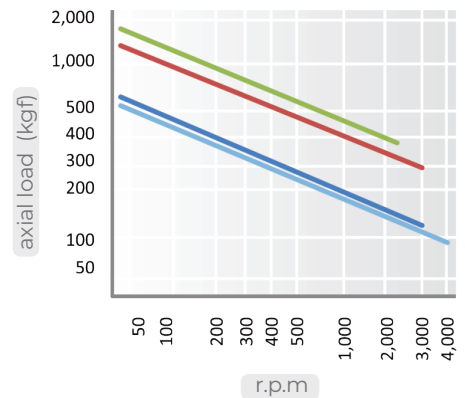
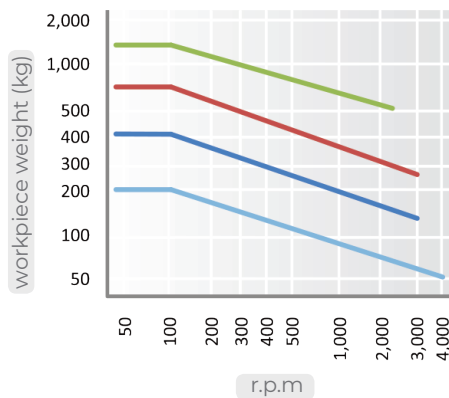
Unit: mm, kg

| MODEL              | MT | A    | B    | C   | D  | E  | F   | G  | L   | Workpiece Weight | Max, R.P.M | Weight | Max, Run Out |
|--------------------|----|------|------|-----|----|----|-----|----|-----|------------------|------------|--------|--------------|
| 071002<br>(072002) | 2  | 27.7 | 23.8 | 69  | 28 | 23 | 4.5 | 10 | 120 | 200              | 4,000      | 0.3    | 0.003        |
| 071003<br>(072003) | 3  | 32.3 | 28   | 85  | 32 | 28 | 5   | 10 | 145 | 400              | 3,000      | 0.4    | 0.003        |
| 071004<br>(072004) | 4  | 45   | 40   | 108 | 48 | 38 | 6   | 14 | 194 | 700              | 3,000      | 1.1    | 0.003        |
| 071005<br>(072005) | 5  | 62   | 54   | 136 | 54 | 51 | 8   | 18 | 241 | 1,300            | 2,000      | 2.7    | 0.003        |

\* (MODEL NO) : Carbide Tip Type

## WP type Technical data

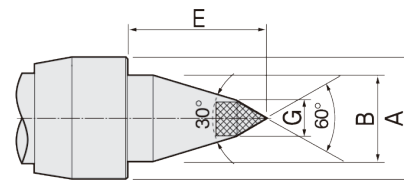
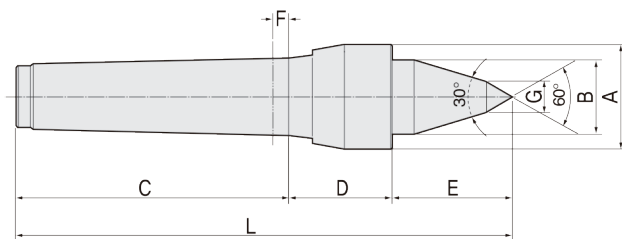
- 2WP
- 3WP
- 4WP
- 5WP



# WPL30

## FEATURES

- Accuracy guaranteed to 0.003mm TIR (0.0001")
- Excellent for CNC, grinder and inspection machines.
- Waterproof enhanced type.
- Heat-treated point to HRc 60 ± 2.
- Small head diameter reduces interference problem between tool holders and turning tools.
- Carbide point available.
- Carbide point to HRa 90 ± 5.



### Available Carbide Tipped Points WPL30C-TYPE

- MT2: 074002
- MT3: 074003
- MT4: 074004
- MT5: 074005

## Dimension

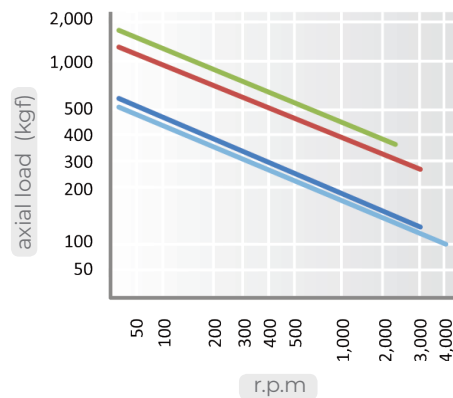
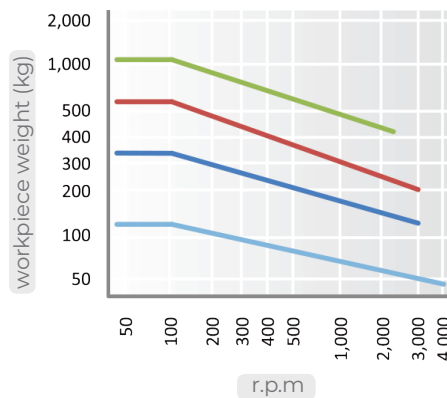
Unit: mm, kg

| MODEL              | MT | A    | B    | C   | D  | E  | F   | G  | L   | Workpiece Weight | Max, R.P.M | Weight | Max, Run Out |
|--------------------|----|------|------|-----|----|----|-----|----|-----|------------------|------------|--------|--------------|
| 073002<br>(074002) | 2  | 27.7 | 23.8 | 69  | 28 | 35 | 4.5 | 12 | 132 | 120              | 4,000      | 0.3    | 0.003        |
| 073003<br>(074003) | 3  | 32.3 | 28   | 85  | 32 | 45 | 5   | 12 | 162 | 320              | 3,000      | 0.5    | 0.003        |
| 073004<br>(074004) | 4  | 45   | 40   | 108 | 48 | 65 | 6   | 14 | 221 | 560              | 3,000      | 1.2    | 0.003        |
| 073005<br>(074005) | 5  | 62   | 54   | 136 | 54 | 90 | 8   | 18 | 280 | 1,000            | 2,000      | 3.2    | 0.003        |

\*(MODEL NO) : Carbide Tip Type

## WPL30 type Technical data

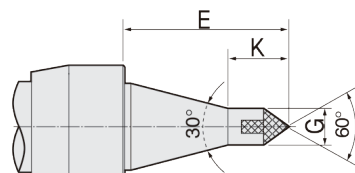
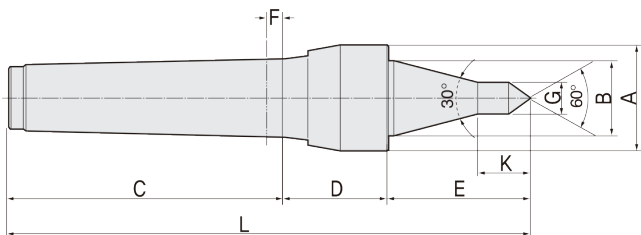
- 2WPL30
- 3WPL30
- 4WPL30
- 5WPL30



# WPL30A

## FEATURES

- Accuracy guaranteed to 0.003mm TIR (0.0001")
- Excellent for CNC, grinder and inspection machines.
- Waterproof enhanced type.
- Heat-treated point to HRc 60 ± 2.
- Small head diameter reduces interference problem between tool holders and turning tools.
- Carbide point available.
- Carbide point to HRa 90 ± 5.



### Available Carbide Tipped Points WPL30AC-TYPE

- MT2: 076002
- MT3: 076003
- MT4: 076004
- MT5: 076005

## Dimension

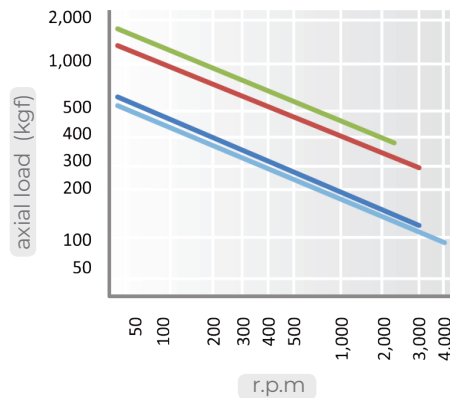
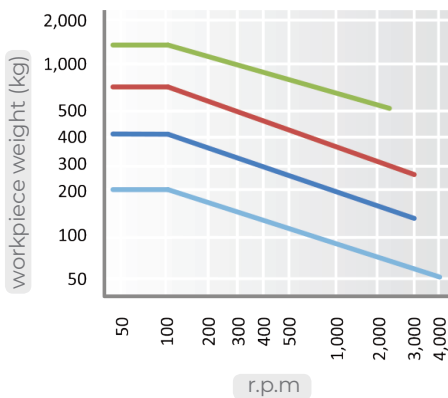
Unit: mm. kg

| MODEL              | MT | A    | B    | C   | D  | E    | F   | G    | K  | L   | Workpiece Weight | Max, R.P.M | Weight | Max, Run Out |
|--------------------|----|------|------|-----|----|------|-----|------|----|-----|------------------|------------|--------|--------------|
| 075002<br>(076002) | 2  | 27.7 | 23.8 | 69  | 28 | 42   | 4.5 | 10   | 14 | 139 | 100              | 4,000      | 0.3    | 0.003        |
| 075003<br>(076003) | 3  | 32.3 | 28   | 85  | 32 | 47.6 | 5   | 10   | 14 | 167 | 280              | 3,000      | 0.5    | 0.003        |
| 075004<br>(076004) | 4  | 45   | 40   | 108 | 48 | 75.3 | 6   | 12.5 | 24 | 236 | 500              | 3,000      | 1.2    | 0.003        |
| 075005<br>(076005) | 5  | 62   | 54   | 136 | 54 | 110  | 8   | 12.5 | 24 | 300 | 900              | 2,000      | 3.2    | 0.003        |

\* (MODEL NO) : Carbide Tip Type

## WPL30A type Technical data

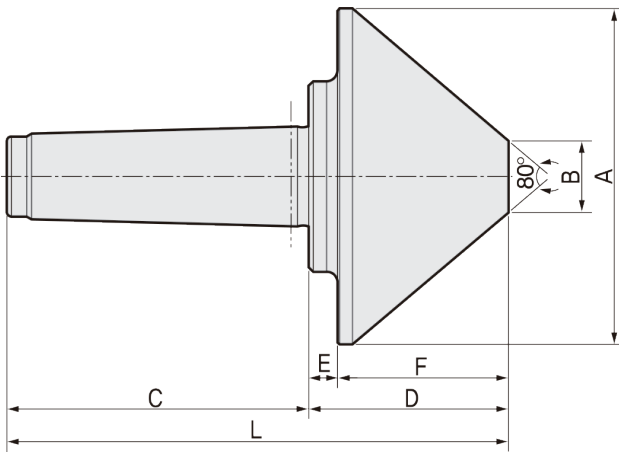
- 2WPL30A
- 3WPL30A
- 4WPL30A
- 5WPL30A



# BP80

## FEATURES

- Accuracy guaranteed to 0.003mm TIR (0.0001")
- Excellent for heavy duty lathe applications.
- For pipe work, tube work and parts with extra-large center holes.
- Heat-treated point to HRc 60 ± 2.
- Adjust the shaking of the head part with screw.
- The design prevents ingress of coolant and chips.



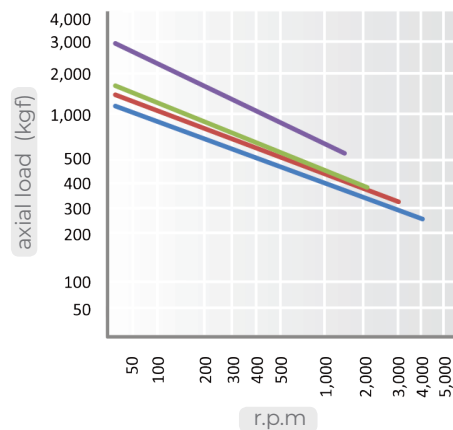
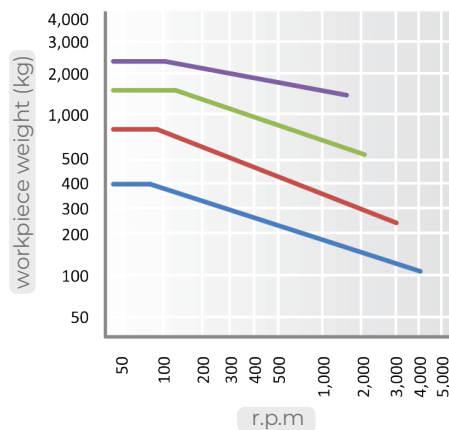
## Dimension

Unit: mm. kg

| MODEL  | MT | A   | B  | C   | D   | E  | F   | L   | Workpiece Weight | Max, R.P.M | Weight | Max, Run Out |
|--------|----|-----|----|-----|-----|----|-----|-----|------------------|------------|--------|--------------|
| 083003 | 3  | 95  | 20 | 85  | 60  | 10 | 50  | 145 | 400              | 4,000      | 2.4    | 0.003        |
| 083004 | 4  | 125 | 29 | 108 | 77  | 13 | 64  | 185 | 800              | 3,000      | 3.9    | 0.003        |
| 083005 | 5  | 150 | 32 | 136 | 90  | 13 | 77  | 226 | 1,600            | 2,000      | 6.9    | 0.003        |
| 083006 | 6  | 200 | 38 | 189 | 120 | 15 | 105 | 309 | 2,500            | 1,500      | 17     | 0.005        |

## BP80 type Technical data

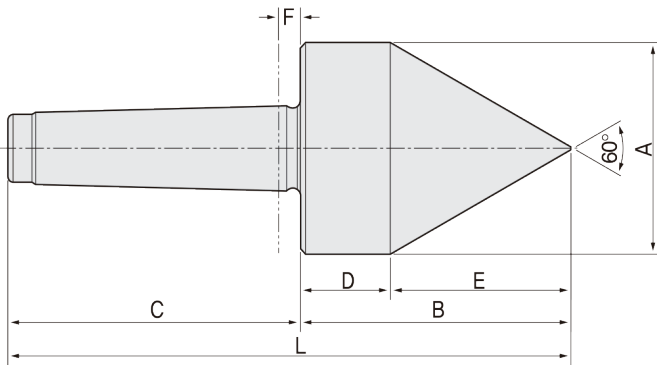
- 3BP80
- 4BP80
- 5BP80
- 6BP80



# BP60

## FEATURES

- Accuracy guaranteed to 0.003mm TIR (0.0001")
- Excellent for pipe work, tube work and parts with extra-large center holes.
- Heat-treated point to HRc 60 ± 2.
- Used both as a centering taper for hollow bodies and as a center for machining standard workpiece.



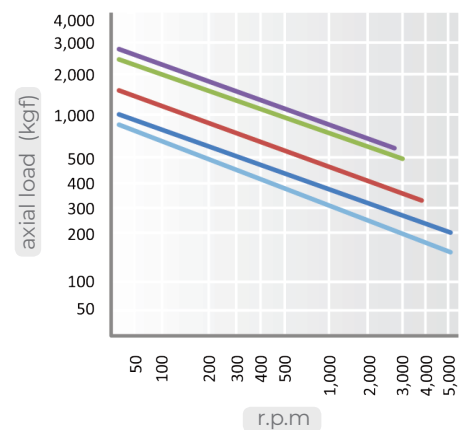
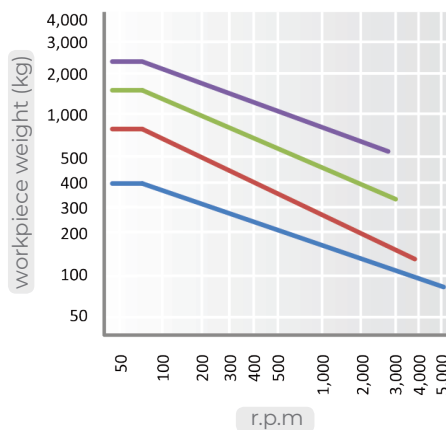
## Dimension

Unit: mm. kg

| MODEL  | MT | A   | B    | C   | D    | E   | F  | L     | Workpiece Weight | Max, R.P.M | Weight | Max, Run Out |
|--------|----|-----|------|-----|------|-----|----|-------|------------------|------------|--------|--------------|
| 081002 | 2  | 44  | 66   | 68  | 28   | 38  | 6  | 134   | 400              | 5,000      | 1.5    | 0.003        |
| 081003 | 3  | 56  | 76.5 | 85  | 28.5 | 48  | 6  | 161.5 | 400              | 5,000      | 1.5    | 0.003        |
| 081004 | 4  | 78  | 100  | 108 | 33   | 67  | 8  | 208   | 800              | 3,800      | 2.3    | 0.003        |
| 081005 | 5  | 98  | 125  | 136 | 41   | 84  | 8  | 261   | 1,600            | 3,000      | 5      | 0.003        |
| 081006 | 6  | 118 | 154  | 189 | 53   | 101 | 10 | 343   | 2,500            | 2,500      | 11.2   | 0.005        |

## BP60 type Technical data

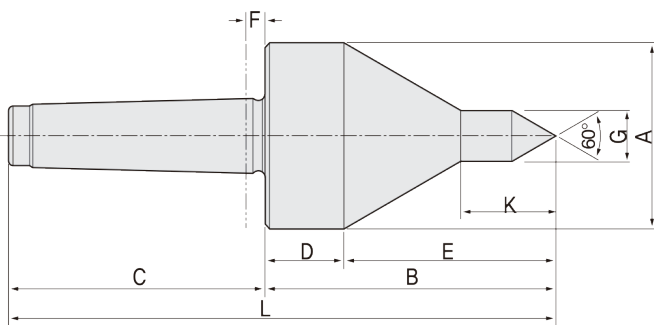
- 2,3BP60
- 4BP60
- 5BP60
- 6BP60



# BP60A

## FEATURES

- Accuracy guaranteed to 0.003mm TIR (0.0001")
- Excellent for pipe work, tube work and parts with extra-large center holes.
- Heat-treated point to HRc 60 ± 2.
- Used both as a centering taper for hollow bodies and as a center for machining standard workpiece.



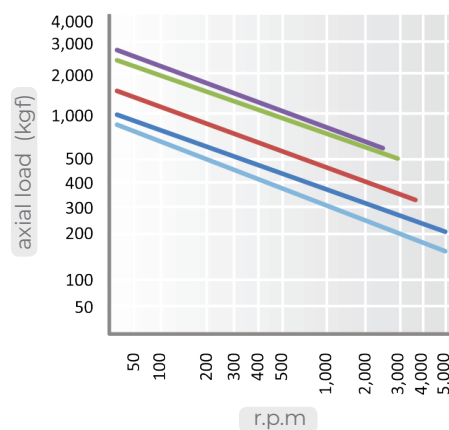
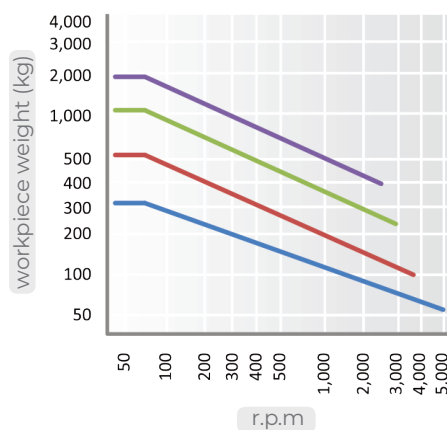
## Dimension

Unit: mm, kg

| MODEL  | MT | A   | B     | C   | D    | E     | F  | G  | K    | L     | Workpiece Weight | Max, R.P.M | Weight | Max, Run Out |
|--------|----|-----|-------|-----|------|-------|----|----|------|-------|------------------|------------|--------|--------------|
| 085002 | 2  | 44  | 79    | 68  | 32.3 | 46.7  | 6  | 12 | 19   | 147   | 320              | 5,000      | 1      | 0.003        |
| 085003 | 3  | 56  | 86    | 85  | 28.9 | 57.1  | 6  | 12 | 19   | 171   | 320              | 5,000      | 1      | 0.003        |
| 085004 | 4  | 78  | 103.5 | 108 | 26.3 | 77.2  | 8  | 16 | 23.5 | 211.5 | 560              | 3,800      | 2.3    | 0.003        |
| 085005 | 5  | 98  | 140   | 136 | 41.6 | 98.4  | 8  | 19 | 30   | 276   | 1,200            | 3,000      | 5      | 0.003        |
| 085006 | 6  | 118 | 165   | 189 | 44.3 | 120.7 | 10 | 19 | 35   | 354   | 2,000            | 2,500      | 10     | 0.005        |

## BP60A type Technical data

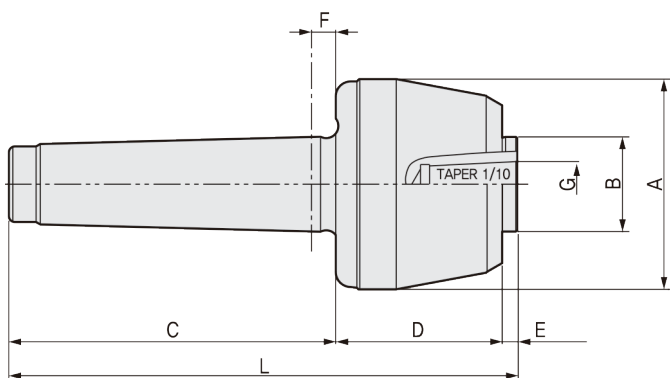
- 2,3BP60A
- 4BP60A
- 5BP60A
- 6BP60A



# BNI

## FEATURES

- Accuracy for center inner diameter guaranteed to 0.003.
- Accuracy after point locking guaranteed to 0.005
- Excellent for versatile production by changing insert shafts quickly.
- Heat-treated point to HRc 60 ± 2.
- 6 types of standard point is available.
- Because of the insert shafts, the admissible workpiece weight is limited.
- Mounting taper of point is 1/10 degree.
- Order made special shape point is available.



## Dimension

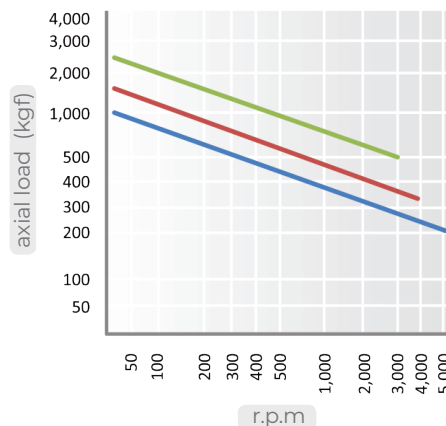
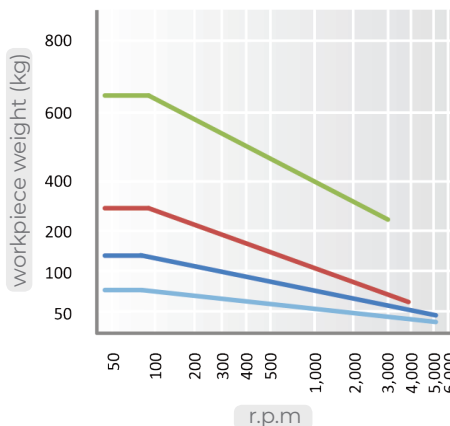
Unit: mm. kg

| MODEL  | MT | A  | B  | C   | D    | E | F | G  | L     | Workpiece Weight | Max, R.P.M | Weight | Max, Run Out |
|--------|----|----|----|-----|------|---|---|----|-------|------------------|------------|--------|--------------|
| 051002 | 2  | 50 | 25 | 68  | 43.5 | 5 | 6 | 12 | 116.5 | 80               | 5,000      | 0.6    | 0.005        |
| 051003 | 3  | 50 | 25 | 85  | 43.5 | 5 | 6 | 12 | 133.5 | 150              | 5,000      | 0.8    | 0.005        |
| 051004 | 4  | 69 | 32 | 108 | 55   | 5 | 8 | 15 | 168   | 250              | 3,800      | 1.7    | 0.005        |
| 051005 | 5  | 88 | 40 | 136 | 70   | 6 | 8 | 22 | 212   | 650              | 3,000      | 3.9    | 0.005        |

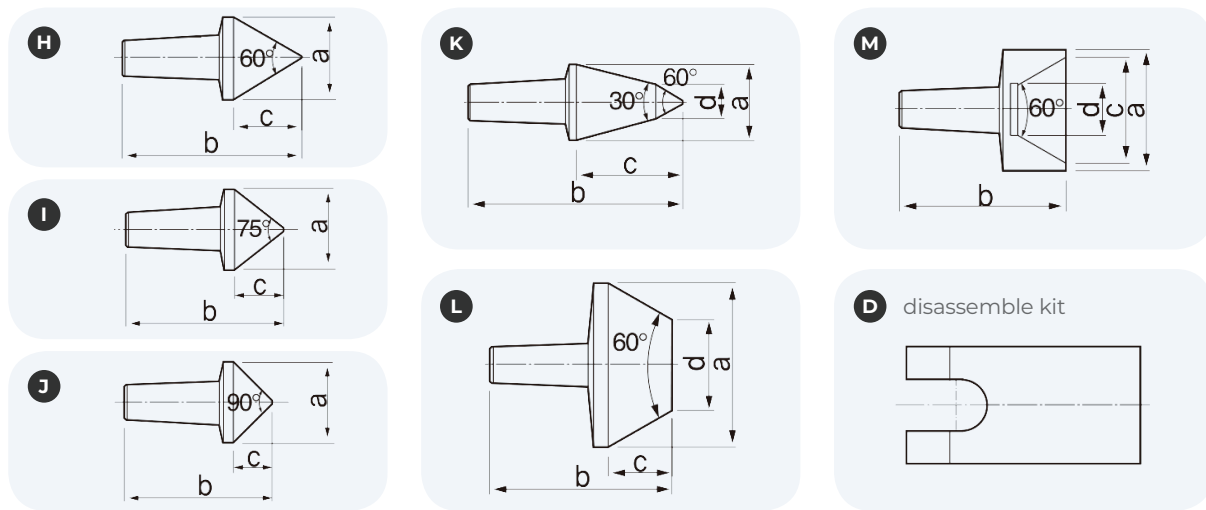
\* Order example : '051004 Body' = MT4 BNI body only (without an insert shaft)  
 '051004 SET' = MT4 BNI body and 6 insert shaft included

## BNItype Technical data

- 2BNI
- 3BNI
- 4BNI
- 5BNI



# BNI POINTS



\* Set of BNI includes 6 type of insert shaft and disassemble kit

## Dimension

Unit: mm. kg

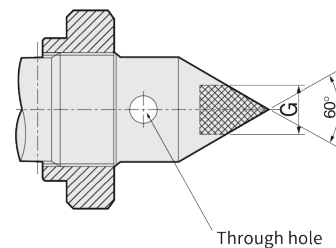
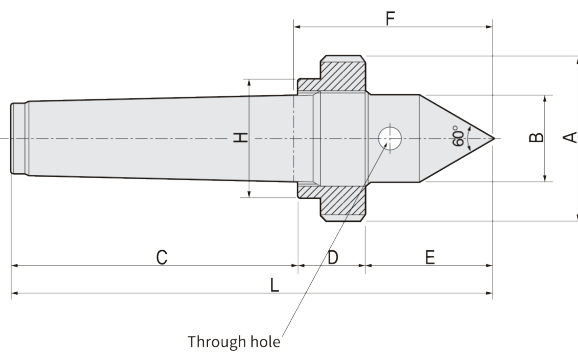
| MODEL  | MT |   | H    | I    | J    | K    | L    | M    |
|--------|----|---|------|------|------|------|------|------|
| 051002 | 2  | a | 24   | 24   | 24   | 18   | 45   | 22   |
|        |    | b | 51.5 | 46.5 | 43   | 55.5 | 51   | 40   |
|        |    | c | 20   | 15   | 11.5 | 25   | 17.5 | 18   |
|        |    | d | -    | -    | -    | 8    | 25   | 6.5  |
| 051003 | 3  | a | 24   | 24   | 24   | 18   | 45   | 22   |
|        |    | b | 51.5 | 46.5 | 43   | 55.5 | 51   | 40   |
|        |    | c | 20   | 15   | 11.5 | 25   | 17.5 | 18   |
|        |    | d | -    | -    | -    | 8    | 25   | 6.5  |
| 051004 | 4  | a | 28   | 28   | 28   | 26   | 55   | 40   |
|        |    | b | 61.5 | 55.5 | 51.5 | 73   | 61.5 | 55   |
|        |    | c | 23.5 | 17.5 | 13.5 | 36   | 21.5 | 35   |
|        |    | d | -    | -    | -    | 12   | 30.2 | 16.5 |
| 051005 | 5  | a | 38   | 38   | 38   | 32   | 70   | 52   |
|        |    | b | 78   | 70   | 64   | 90   | 74   | 65   |
|        |    | c | 32   | 24   | 18.5 | 46   | 26   | 45   |
|        |    | d | -    | -    | -    | 13   | 40   | 25.4 |

\* Order example: '051004H' = MT 4 BNI insert shaft type: H

# DEAD CENTER

## FEATURES

- Accuracy guaranteed to 0.002m TIR (0.0001")
- Excellent for built-in-tail stock machines.
- Heat-treated point to HRC 60 ± 2.
- Draw-off nut type. (Help to easy release from tail-stock.)
- Carbide point available.
- Carbide point to HRA 90 ± 5.



### Available Carbide Tipped Points DCC-TYPE

- MT3: 132003
- MT4: 132004
- MT5: 132005
- MT6: 132006

## Dimension

Unit: mm. kg

| MODEL              | MT | A   | B  | C   | D  | E  | F    | H  | G  | L   | Weight | Max, Run out |
|--------------------|----|-----|----|-----|----|----|------|----|----|-----|--------|--------------|
| 131003<br>(132003) | 3  | 50  | 24 | 82  | 16 | 42 | 59   | 40 | 10 | 140 | 0.8    | 0.002        |
| 131004<br>(132004) | 4  | 60  | 32 | 104 | 24 | 47 | 72.5 | 43 | 14 | 175 | 1.3    | 0.002        |
| 131005<br>(132005) | 5  | 80  | 45 | 131 | 30 | 60 | 93   | 58 | 18 | 221 | 3.0    | 0.002        |
| 131006<br>(132006) | 6  | 100 | 60 | 187 | 30 | 72 | 107  | 78 | 30 | 289 | 6.9    | 0.002        |

\* (MODEL NO) : Carbide Tip Type

# SD

## FEATURES

- Accuracy guaranteed to 0.005 TIR (0.0001")
- Excellent for complement to Face Driver.
- Automatic thrust adjustment and quick operation.
- Heat-treated point to HRc 60 ± 2.
- The axial force can easily be read off from a colored ring around the rotor: low, medium, high.
- Shock absorb performance for protecting spindle bearings from repetitive contact impact
- The high load dish spring is used to compensate for length variation in the work parts, as well as depth variations in the center holes of the work parts.
- Drain hole have to be located on bottom side to prevent ingress of coolant.
- Carbide point available.
- Carbide point to HRa 90 ± 5.

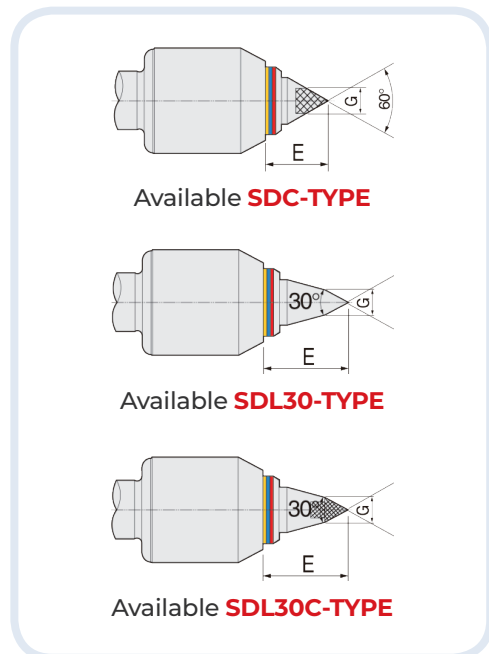
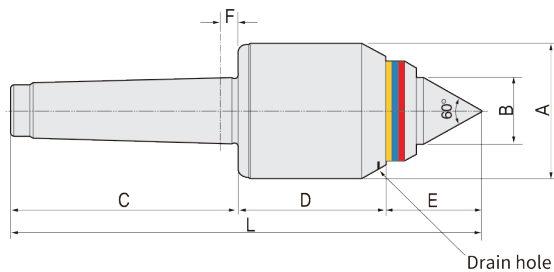


| MT | Axial force (kgf) |             |             |
|----|-------------------|-------------|-------------|
| 2  | 0~200             | 200~400     | 400~600     |
| 3  | 0~300             | 300~600     | 600~900     |
| 4  | 0~400             | 400~800     | 800~1,200   |
| 5  | 0~1,500           | 1,500~3,000 | 3,000~4,050 |

Low Pressure

Medium Pressure

High Pressure



## Dimension

Unit: mm, kg

| SD - Standard 60°  |    |    |    |     |    |     |   |    |     |                  |            |        |              |
|--------------------|----|----|----|-----|----|-----|---|----|-----|------------------|------------|--------|--------------|
| MODEL              | MT | A  | B  | C   | D  | E   | F | G  | L   | Workpiece Weight | Max, R.P.M | Weight | Max, Run Out |
| 101002<br>(102002) | 2  | 45 | 20 | 68  | 48 | 29  | 6 | 10 | 145 | 400              | 5,000      | 1.2    | 0.005        |
| 101003<br>(102003) | 3  | 52 | 25 | 85  | 54 | 34  | 6 | 10 | 173 | 700              | 4,000      | 1.2    | 0.005        |
| 101004<br>(102004) | 4  | 65 | 32 | 108 | 70 | 45  | 8 | 14 | 223 | 1,200            | 3,000      | 2.4    | 0.005        |
| 101005<br>(102005) | 5  | 94 | 55 | 136 | 88 | 70  | 8 | 18 | 294 | 2,000            | 2,000      | 6.4    | 0.005        |
| SD - Extended 30°  |    |    |    |     |    |     |   |    |     |                  |            |        |              |
| MODEL              | MT | A  | B  | C   | D  | E   | F | G  | L   | Workpiece Weight | Max, R.P.M | Weight | Max, Run Out |
| 103002<br>(104002) | 2  | 45 | 20 | 68  | 48 | 38  | 6 | 10 | 154 | 320              | 5,000      | 1.3    | 0.005        |
| 103003<br>(104003) | 3  | 52 | 25 | 85  | 54 | 50  | 6 | 10 | 189 | 560              | 4,000      | 1.3    | 0.005        |
| 103004<br>(104004) | 4  | 65 | 32 | 108 | 70 | 62  | 8 | 14 | 240 | 960              | 3,000      | 2.5    | 0.005        |
| 103005<br>(104005) | 5  | 94 | 55 | 136 | 88 | 105 | 8 | 18 | 329 | 1,600            | 2,000      | 6.5    | 0.005        |

\* (MODEL NO) : Carbide Tip Type

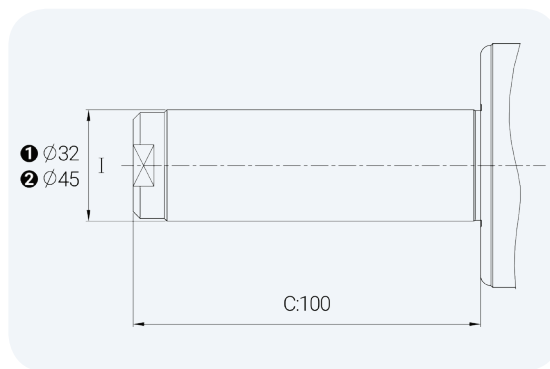
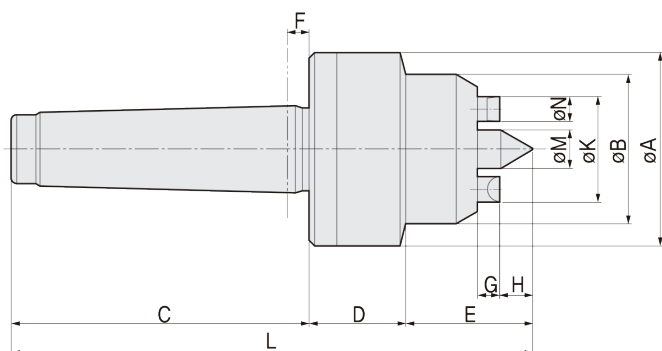
# FACE DRIVER

## FEATURES

- Accuracy guaranteed to 0.02 TIR (0.001")
- Excellent for turning machine and gear hobbing process.
- Only single clamping is needed to entire cutting process.
- Improve productivity in mass productions as well as high precision.
- Able to use at Head stock instead of clamping chuck.
- Keep the workpiece stable with no slippage even during heavy cuts.
- Nano technology finished drive pins offer superior life time.
- Wide range clamping capability.



## Available Straight shank

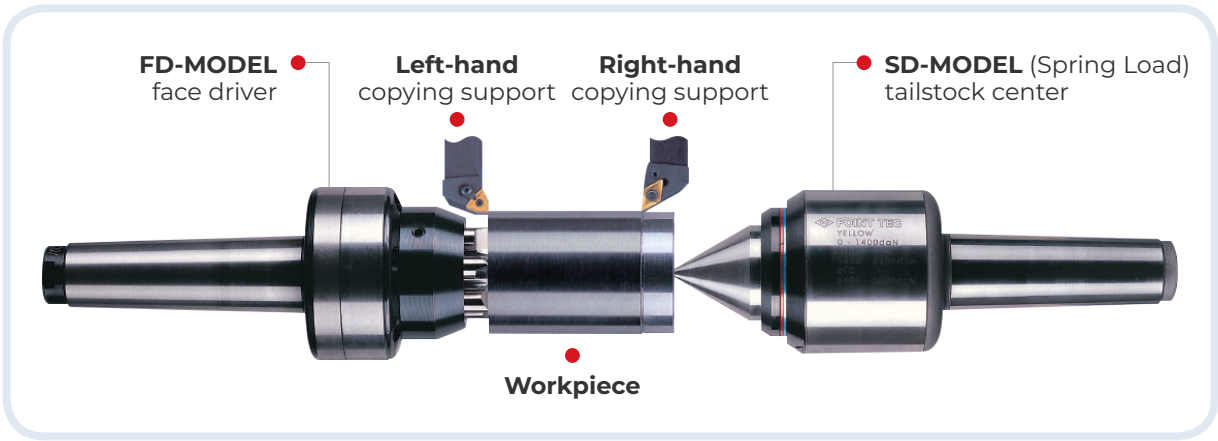


\* order example : 0909ST45 = FD32 with straight shank Ø45

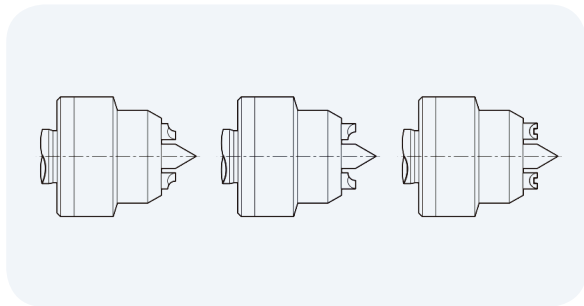
## Dimension

Unit: mm. kg

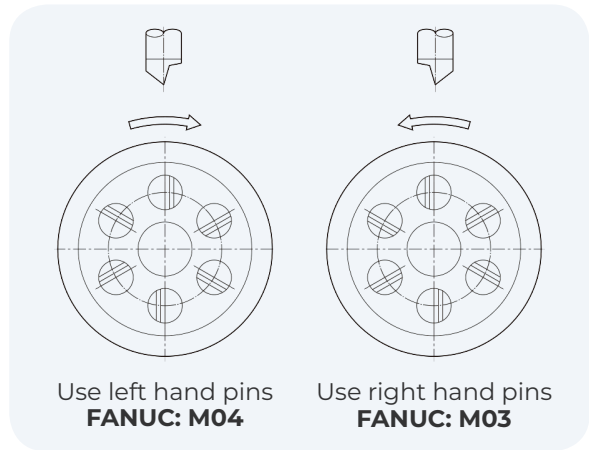
| MODEL | MODEL NO. | MT | A  | B  | C   | D    | E    | F | G   | H    | L     | K  | M  | N  | Number of driving pins | Work size | Workplece Weight | Weight | Max Run Out |
|-------|-----------|----|----|----|-----|------|------|---|-----|------|-------|----|----|----|------------------------|-----------|------------------|--------|-------------|
| FD31  | 090803    | 3  | 42 | 30 | 89  | 24.5 | 30.8 | 6 | 6   | 4.3  | 145.3 | 17 | 5  | 5  | 4                      | Ø19~Ø34   | 50               | 0.8    | 0.02        |
|       | 090804    | 4  | 42 | 30 | 108 | 24.5 | 30.8 | 8 | 6   | 4.3  | 164.3 | 17 | 5  | 5  | 4                      | Ø19~Ø34   | 50               | 1.0    | 0.02        |
|       | 090805    | 5  | 42 | 30 | 136 | 24.5 | 30.8 | 8 | 6   | 4.3  | 192.3 | 17 | 5  | 5  | 4                      | Ø19~Ø34   | 50               | 1.5    | 0.02        |
| FD32  | 090903    | 3  | 52 | 40 | 89  | 26.5 | 35.8 | 6 | 6.5 | 7.8  | 151.3 | 26 | 9  | 7  | 5                      | Ø28~Ø50   | 55               | 1.0    | 0.02        |
|       | 090904    | 4  | 52 | 40 | 108 | 26.5 | 35.8 | 8 | 6.5 | 7.8  | 170.3 | 26 | 9  | 7  | 5                      | Ø28~Ø50   | 55               | 1.2    | 0.02        |
|       | 090905    | 5  | 52 | 40 | 136 | 26.5 | 35.8 | 8 | 6.5 | 7.8  | 198.3 | 26 | 9  | 7  | 5                      | Ø28~Ø50   | 55               | 2.0    | 0.02        |
| FD33  | 091003    | 3  | 70 | 54 | 89  | 36   | 46   | 6 | 10  | 11   | 171   | 38 | 14 | 9  | 6                      | Ø40~Ø72   | 65               | 1.2    | 0.02        |
|       | 091004    | 4  | 70 | 54 | 108 | 36   | 46   | 8 | 10  | 11   | 190   | 38 | 14 | 9  | 6                      | Ø40~Ø72   | 65               | 2.0    | 0.02        |
|       | 091005    | 5  | 70 | 54 | 136 | 36   | 46   | 8 | 10  | 11   | 218   | 38 | 14 | 9  | 6                      | Ø40~Ø72   | 65               | 2.9    | 0.02        |
| FD34  | 091104    | 4  | 82 | 72 | 108 | 40   | 56.1 | 8 | 11  | 14.1 | 204.1 | 54 | 20 | 14 | 6                      | Ø55~Ø100  | 100              | 3.1    | 0.02        |
|       | 091105    | 5  | 82 | 72 | 136 | 40   | 56.1 | 8 | 11  | 14.1 | 232.1 | 54 | 20 | 14 | 6                      | Ø55~Ø100  | 100              | 3.9    | 0.02        |



**Special drive pin styles**

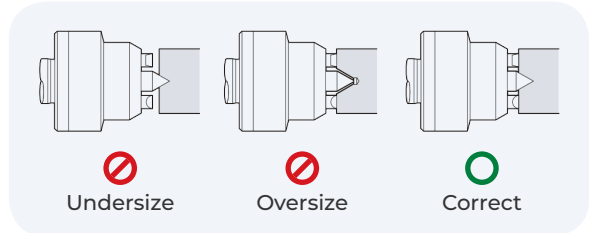


**Driving pins direction of rotation**

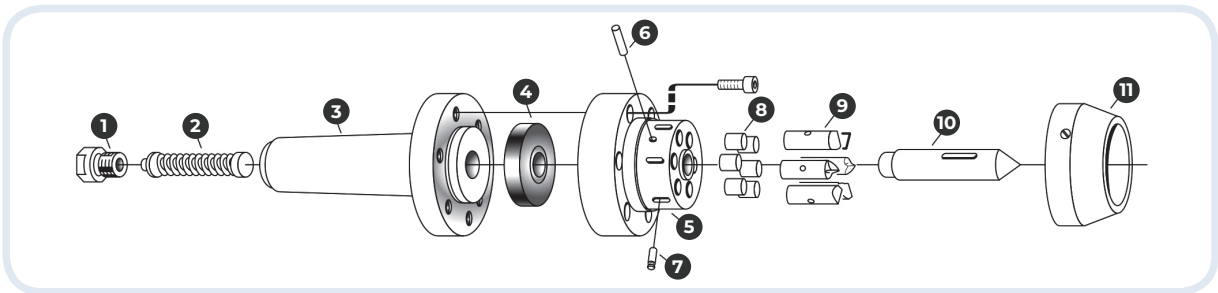


**Center hole size**

| NO | MODEL | CENTER HOLE DIA. LIMITS |    |               |    |
|----|-------|-------------------------|----|---------------|----|
|    |       | MIN( $\phi$ )           |    | MAX( $\phi$ ) |    |
|    |       | inch                    | mm | inch          | mm |
| 1  | FD31  | 0.08                    | 2  | 0.16          | 4  |
| 2  | FD32  | 0.16                    | 4  | 0.31          | 8  |
| 3  | FD33  | 0.16                    | 6  | 0.47          | 12 |
| 4  | FD34  | 0.31                    | 8  | 0.63          | 16 |



**The construction of face driver**



1 End cover 2 Spring rod 3 Shank 4 SP urethane 5 Head 6 Pin At Point 7 Pin At Pin 8 Roller 9 Drive pin 10 Center Point 11 Cover

**FD Sparepart**

| PART NO. | PART NAME    | FD31  | FD32  | FD33  | FD34  |
|----------|--------------|-------|-------|-------|-------|
| 4        | SP urethane  | 90816 | 90916 | 91016 | 91116 |
| 6        | Pin-At-Point | 90821 | 90921 | 91021 | 91121 |
| 7        | Pin-At-Pin   | 90822 | 90922 | 91022 | 91122 |
| 8        | Roller       | 90817 | 90917 | 91017 | 91117 |

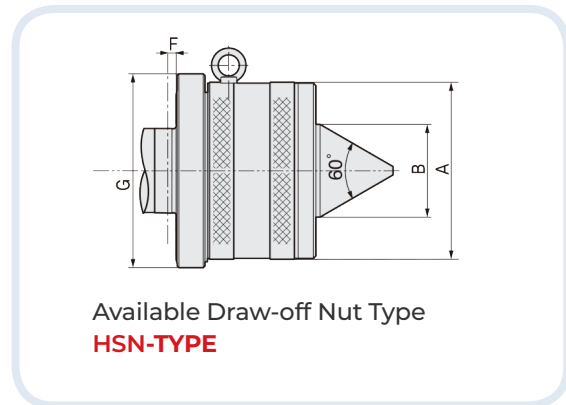
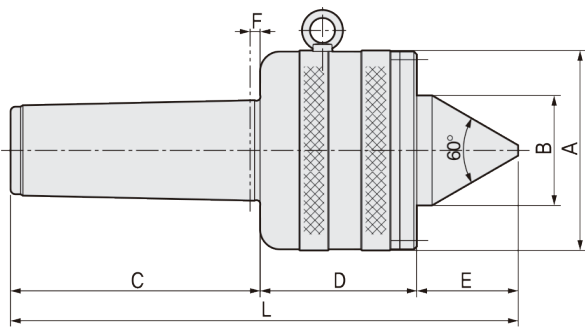
| PART NO. | PART NAME    | FD31  | FD32  | FD33  | FD34  |
|----------|--------------|-------|-------|-------|-------|
| 9        | Drive pin    | 90812 | 90912 | 91012 | 91112 |
| 10       | Center point | 90814 | 90914 | 91014 | 91114 |
| 11       | Cover        | 90823 | 90923 | 91023 | 91123 |



# HS

## FEATURES

- Accuracy guaranteed to 0.01 TIR (0.0004")
- Designed specifically for large and heavy-duty workpieces over 10tons
- Excellent for high load cutting operations on CNC lathe and grinding machine.
- Heat-treated point to HRc 60±2.
- Two double-row cylindrical roller bearings and spherical roller thrust bearings support the primary load area of the point.
- Hardened point and body for extra strength, rigidity, and long life.
- Available draw-off nut type, 75° angle point and 90° angle point.



## Dimension

Unit: mm. kg

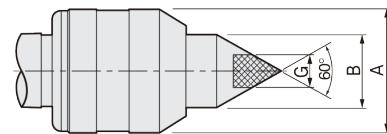
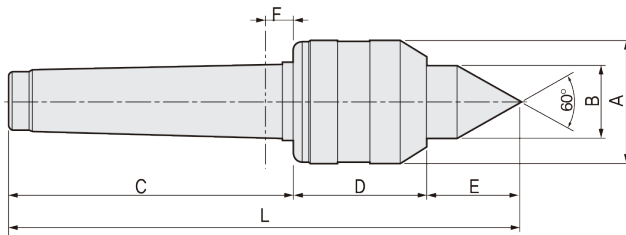
| MODEL | TAPER | A   | B   | C   | D     | E     | F  | G   | K     | Workpiece Weight | Max. R.P.M | Weight | Max. Run Out |
|-------|-------|-----|-----|-----|-------|-------|----|-----|-------|------------------|------------|--------|--------------|
| HS80  | 1/10  | 178 | 110 | 203 | 154   | 96.1  | 10 | 200 | 453.1 | 10,000           | 650        | 35     | 0.010        |
| HS100 | 1/10  | 198 | 110 | 250 | 157   | 101.5 | 15 | 230 | 508.5 | 15,000           | 500        | 48.3   | 0.010        |
| HS110 | 1/10  | 238 | 125 | 365 | 162.5 | 121.5 | 15 | 250 | 649   | 20,000           | 500        | 60     | 0.010        |
| HS120 | 1/10  | 238 | 125 | 293 | 162.5 | 121.5 | 15 | 250 | 577   | 20,000           | 500        | 58     | 0.010        |
| HS80  | 1/20  | 178 | 110 | 203 | 154   | 96.1  | 10 | 200 | 453.1 | 10,000           | 650        | 36.2   | 0.010        |
| HS100 | 1/20  | 198 | 110 | 250 | 157   | 101.5 | 15 | 230 | 508.5 | 15,000           | 500        | 49.5   | 0.010        |
| HS110 | 1/20  | 238 | 125 | 365 | 162.5 | 121.5 | 15 | 250 | 649   | 20,000           | 500        | 60     | 0.010        |
| HS120 | 1/20  | 238 | 125 | 293 | 162.5 | 121.5 | 15 | 250 | 577   | 20,000           | 500        | 58     | 0.010        |

Order example : 'HS100 1/10' = HS100 type with 1/10 taper

# BB

## FEATURES

- Accuracy guaranteed to 0.003 TIR (0.0001")
- Excellent for light-medium-duty work on conventional lathe machines.
- Slim diameter improve tool clearance.
- Heat-treated point to HRc 60±2.
- Rear bearing is sealed, protecting assembly from coolant and chips.
- Carbide point available.
- Carbide point to HRa 90±5



### Available Carbide Tipped Points BBC-TYPE

- MT3: 122003
- MT4: 122004
- MT5: 122005

## Dimension

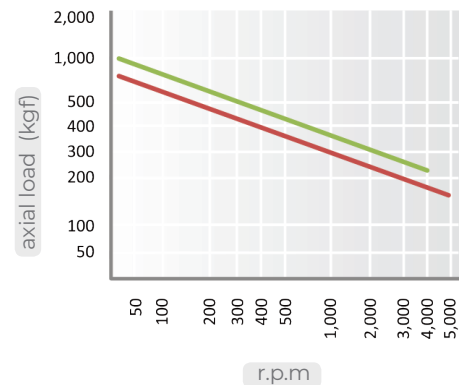
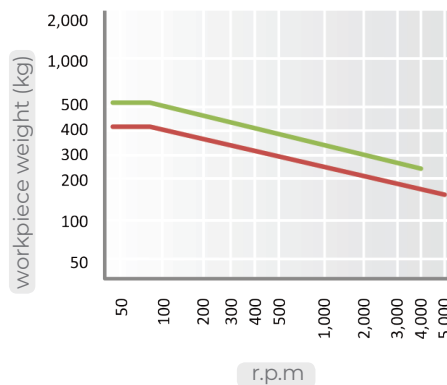
Unit: mm. kg

| MODEL              | MT | A    | B  | C   | D  | E    | F   | G  | L     | Workpiece Weight | Max, Axial Load | Max, R.P.M | Weight | Max, Run Out |
|--------------------|----|------|----|-----|----|------|-----|----|-------|------------------|-----------------|------------|--------|--------------|
| 121003<br>(122003) | 3  | 44.5 | 25 | 85  | 44 | 32.5 | 5.3 | 12 | 161.5 | 400              | 600             | 5,000      | 1      | 0.003        |
| 121004<br>(122004) | 4  | 44.5 | 25 | 108 | 44 | 32.5 | 5.3 | 12 | 184.5 | 400              | 600             | 5,000      | 1.2    | 0.003        |
| 121005<br>(122005) | 5  | 63   | 28 | 136 | 58 | 35   | 6.3 | 14 | 229   | 500              | 750             | 4,000      | 2.8    | 0.003        |

\*(MODEL NO) : Carbide Tip Type

## BB type Technical data

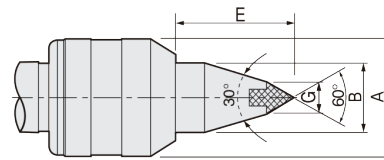
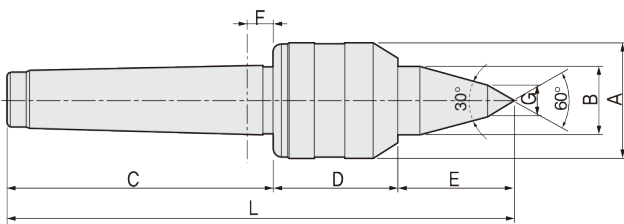
- 3,4BB
- 5BB



# BBL30

## FEATURES

- Accuracy guaranteed to 0.003 TIR (0.0001")
- Excellent for light-medium-duty work on conventional lathe machines.
- Slim diameter improve tool clearance.
- Heat-treated point to HRc 60±2.
- Rear bearing is sealed, protecting assembly from coolant and chips.
- Carbide point available.
- Carbide point to HRA 90±5



### Available Carbide Tipped Points

#### BBL30C-TYPE

- MT3: 124003
- MT4: 124004
- MT5: 124005

## Dimension

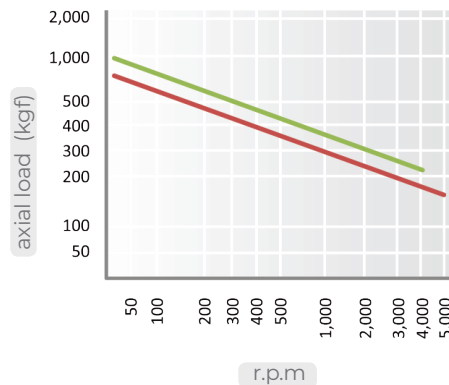
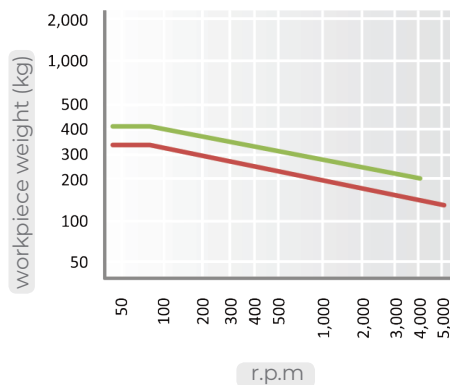
Unit: mm, kg

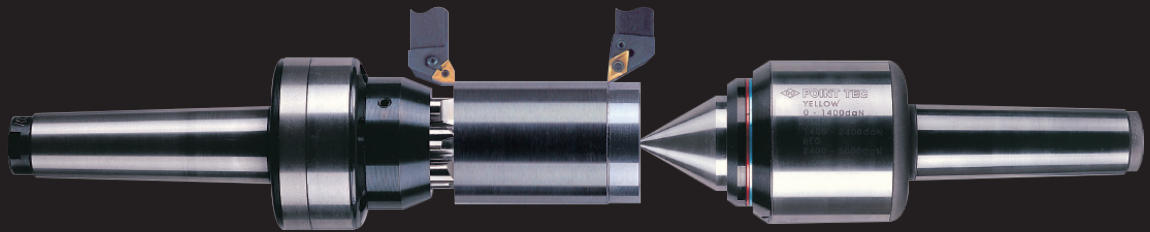
| MODEL              | MT | A    | B  | C   | D  | E  | F   | G  | L   | Workpiece Weight | Max, Axial Load | Max, R.P.M | Weight | Max, Run Out |
|--------------------|----|------|----|-----|----|----|-----|----|-----|------------------|-----------------|------------|--------|--------------|
| 123003<br>(124003) | 3  | 44.5 | 22 | 85  | 44 | 36 | 5.3 | 12 | 165 | 320              | 600             | 5,000      | 1      | 0.003        |
| 123004<br>(124004) | 4  | 44.5 | 22 | 108 | 44 | 36 | 5.3 | 12 | 188 | 320              | 600             | 5,000      | 1.2    | 0.003        |
| 123005<br>(124005) | 5  | 63   | 28 | 136 | 58 | 44 | 6.3 | 14 | 238 | 400              | 750             | 4,000      | 3      | 0.003        |

\* (MODEL NO) : Carbide Tip Type

## BBL30 type Technical data

- 3,4BBL30
- 5BBL30





 **POINT TECH CO., LTD.**

KOREA : 292, Cheomdanyeonsin-ro, Buk-gu,  
Gwangju, Korea

TEL : +82-62-942-0451 FAX : +82-62-941-1330

Web : <http://www.pointtec.com>

E-mail : [point@pointtec.com](mailto:point@pointtec.com)

본사 공장 : 광주광역시 북구 첨단연신로 292

TEL : +82-62-942-0451 FAX : +82-62-941-1330

E-mail : [point@pointtec.com](mailto:point@pointtec.com)